

## OSBL8 Rabbit pAb

CatalogNo: YT6409

### Key Features

#### Host Species

- Rabbit

#### Reactivity

- Human, Mouse

#### Applications

- WB

#### MW

- 98kD (Calculated)

#### Isotype

- IgG

### Storage

**Storage\*** -15°C to -25°C/1 year (Do not lower than -25°C)

**Formulation** Liquid in PBS containing 50% glycerol, 0.5% BSA and 0.02% sodium azide.

### Recommended Dilution Ratios

**WB 1:500-2000**

### Basic Information

**Clonality** Polyclonal

### Immunogen Information

**Immunogen** Synthesized peptide derived from human OSBL8 AA range: 290-340

**Specificity** This antibody detects endogenous levels of OSBL8 at Human

### Target Information

**Gene name** OSBPL8 KIAA1451 ORP8 OSBP10

**Protein Name** OSBL8

**Organism**

Human

**Gene ID**

[114882;](#)

**UniProt ID**

[Q9BZF1;](#)

**Cellular Localization**

[Isoform 1]: Endoplasmic reticulum membrane ; Single-pass membrane protein . Nucleus membrane . The presence of the N-terminus extension contains an overall negative charge that may explain the weak localization to the cortical endoplasmic reticulum (Probable). . ; [Isoform 3]: Endoplasmic reticulum membrane ; Single-pass membrane protein. Localizes to the cortical endoplasmic reticulum at the endoplasmic reticulum-plasma membrane contact sites. .

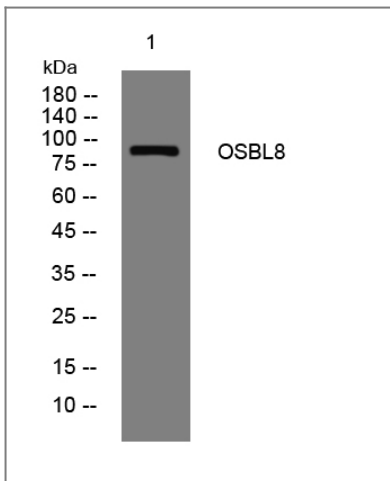
**Tissue specificity**

Widely expressed (PubMed:11735225). Expressed at higher level in macrophages (PubMed:17991739).

**Function**

similarity:Belongs to the OSBP family.,similarity:Contains 1 PH domain.,tissue specificity:Widely expressed.,

## Validation Data



Western blot analysis of lysates from CACO2 cells, primary antibody was diluted at 1:1000, 4° over night

## Contact information

Orders: [order@immunoway.com](mailto:order@immunoway.com)  
Support: [tech@immunoway.com](mailto:tech@immunoway.com)  
Telephone: 877-594-3616 (Toll Free), 408-747-0185  
Website: <http://www.immunoway.com>  
Address: 2200 Ringwood Ave San Jose, CA 95131 USA



Please scan the QR code to access additional product information:  
**OSBL8 Rabbit pAb**