

MICA1 Rabbit pAb

CatalogNo: YT6400

| Key Features

Host Species

- Rabbit

Reactivity

- Human, Mouse, Rat

Applications

- WB, IHC

MW

- 117kD (Calculated)

Isotype

- IgG

| Recommended Dilution Ratios

WB 1:500-2000

IHC 1:50-300

| Storage

Storage* -15°C to -25°C/1 year (Do not lower than -25°C)

Formulation Liquid in PBS containing 50% glycerol, 0.5% BSA and 0.02% sodium azide.

| Basic Information

Clonality Polyclonal

| Immunogen Information

Immunogen Synthesized peptide derived from human MICA1 AA range: 155-205

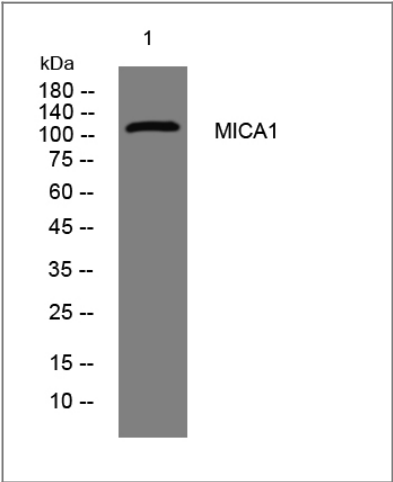
Specificity This antibody detects endogenous levels of MICA1 at Human/Mouse/Rat

| Target Information

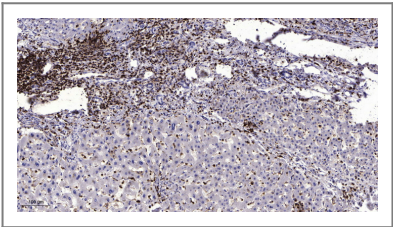
Gene name MICAL1 MICAL NICAL

Protein Name	MICA1		
	Organism	Gene ID	UniProt ID
	Human	64780;	Q8TDZ2;
	Mouse	171580;	Q8VDP3;
	Rat	294520;	D3ZBP4;
Cellular Localization	Cytoplasm. Cytoplasm, cytoskeleton. Midbody . Accumulates transiently at the abscission site before abscission occurs. .		
Tissue specificity	Expressed in the thymus, lung, spleen, kidney, testis and hematopoietic cells.		
Function	cofactor:FAD .,Domain:The C-terminal coiled coil part contains the plexin-interacting region.,Function:May be a cytoskeletal regulator that connects NEDD9 to intermediate filaments.,similarity:Contains 1 CH (calponin-homology) domain.,similarity:Contains 1 LIM zinc-binding domain.,subunit:Associates with the SH3 domain of NEDD9. Interacts with VIM and PLXNA3. Interacts with RAB1B.,tissue specificity:Expressed in the thymus, lung, spleen, kidney, testis and hematopoietic cells.,		

| Validation Data



Western blot analysis of lysates from Hela cells, primary antibody was diluted at 1:1000, 4°over night



Immunohistochemical analysis of paraffin-embedded human liver cancer. 1, Antibody was diluted at 1:200(4° overnight). 2, Tris-EDTA,pH9.0 was used for antigen retrieval. 3,Secondary antibody was diluted at 1:200(room temperature, 45min).

| Contact information

Orders: order@immunoway.com
Support: tech@immunoway.com
Telephone: 877-594-3616 (Toll Free), 408-747-0185
Website: http://www.immunoway.com
Address: 2200 Ringwood Ave San Jose, CA 95131 USA



Please scan the QR code
to access additional
product information:
MICA1 Rabbit pAb

For Research Use Only. Not for Use in Diagnostic Procedures.

[Antibody](#) | [ELISA Kits](#) | [Protein](#) | [Reagents](#)