

CX028 Rabbit pAb

CatalogNo: YT6391

| Key Features

Host Species

- Rabbit

Reactivity

- Human

Applications

- IHC,IF

MW

- 7kD (Calculated)

Isotype

- IgG

| Recommended Dilution Ratios

IHC 1:50-200

IF 1:50-200

| Storage

Storage* -15°C to -25°C/1 year(Do not lower than -25°C)

Formulation Liquid in PBS containing 50% glycerol, 0.5% BSA and 0.02% sodium azide.

| Basic Information

Clonality Polyclonal

| Immunogen Information

Immunogen Synthesized peptide derived from human CX028 AA range: 7-57

Specificity This antibody detects endogenous levels of CX028 at Human

| Target Information

Gene name CXorf28

Protein Name CX028

Organism

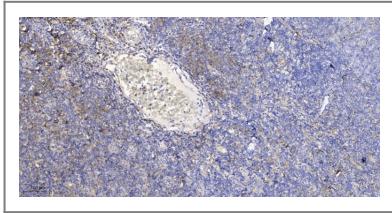
Gene ID

UniProt ID

Human

[A6NGU7](#);

| Validation Data



Immunohistochemical analysis of paraffin-embedded human tonsil. 1, Antibody was diluted at 1:200(4° overnight). 2, Tris-EDTA,pH9.0 was used for antigen retrieval. 3,Secondary antibody was diluted at 1:200(room temperature, 30min).

| Contact information

Orders: order@immunoway.com
Support: tech@immunoway.com
Telephone: 877-594-3616 (Toll Free), 408-747-0185
Website: <http://www.immunoway.com>
Address: 2200 Ringwood Ave San Jose, CA 95131 USA



Please scan the QR code to access additional product information:
CX028 Rabbit pAb

For Research Use Only. Not for Use in Diagnostic Procedures.

[Antibody](#) | [ELISA Kits](#) | [Protein](#) | [Reagents](#)