

VCX1 Rabbit pAb

CatalogNo: YT6373

Key Features

Host Species

- Rabbit

Reactivity

- Human

Applications

- WB

MW

- 23kD (Calculated)

Isotype

- IgG

Recommended Dilution Ratios

WB 1:500-2000

Storage

Storage*

-15°C to -25°C/1 year(Do not lower than -25°C)

Formulation

Liquid in PBS containing 50% glycerol, 0.5% BSA and 0.02% sodium azide.

Basic Information

Clonality

Polyclonal

Immunogen Information

Immunogen

Synthesized peptide derived from human VCX1 AA range: 95-145

Specificity

This antibody detects endogenous levels of VCX1 at Human

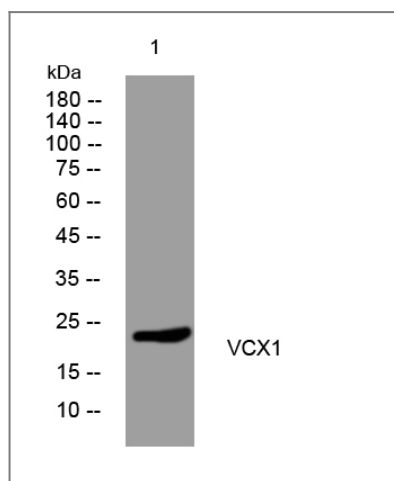
Target Information

Gene name

VCX VCX1 VCX10R VCXB1

Protein Name	VCX1		
	Organism	Gene ID	UniProt ID
	Human	26609 ;	Q9H320 ;
Cellular Localization	nucleus,nucleolus,		
Tissue specificity	Expressed exclusively in testis.		
Function	Function:May mediate a process in spermatogenesis or may play a role in sex ratio distortion.,similarity:Belongs to the VCX/VCY family.,tissue specificity:Expressed exclusively in testis.,		

Validation Data



Western blot analysis of lysates from HuvEc cells, primary antibody was diluted at 1:1000, 4°over night

Contact information

Orders: order@immunoway.com
 Support: tech@immunoway.com
 Telephone: 877-594-3616 (Toll Free), 408-747-0185
 Website: <http://www.immunoway.com>
 Address: 2200 Ringwood Ave San Jose, CA 95131 USA



Please scan the QR code to access additional product information:
VCX1 Rabbit pAb