

## SHOX2 Rabbit pAb

CatalogNo: YT6364

Orthogonal Validated 

### Key Features

**Host Species**

- Rabbit

**Reactivity**

- Human, Mouse, Rat

**Applications**

- WB, IHC, FC

**MW**

- 36kD (Calculated)

**Isotype**

- IgG

### Recommended Dilution Ratios

**WB 1:500-2000****IHC 1:50-300, Flow Cyt 1:100-200**

### Storage

**Storage\***

-15°C to -25°C/1 year (Do not lower than -25°C)

**Formulation**

Liquid in PBS containing 50% glycerol, 0.5% BSA and 0.02% sodium azide.

### Basic Information

**Clonality**

Polyclonal

### Immunogen Information

**Immunogen**

Synthesized peptide derived from human SHOX2 AA range: 37-87

**Specificity**

This antibody detects endogenous levels of SHOX2 at Human/Mouse/Rat

### Target Information

**Gene name**

SHOX2 OG12X SHOT

Protein Name SHOX2

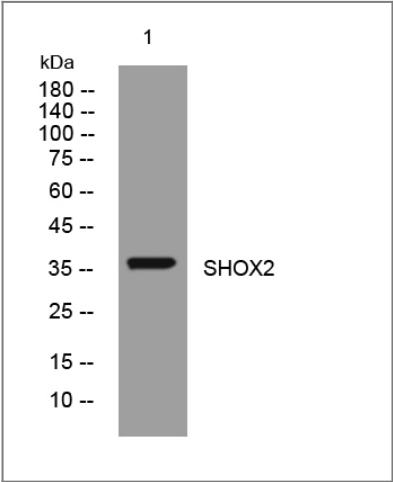
Organism	Gene ID	UniProt ID
Human	<a href="#">6474;</a>	<a href="#">O60902;</a>
Mouse	<a href="#">20429;</a>	<a href="#">P70390;</a>
Rat	<a href="#">25546;</a>	<a href="#">O35750;</a>

Cellular Localization Nucleus.

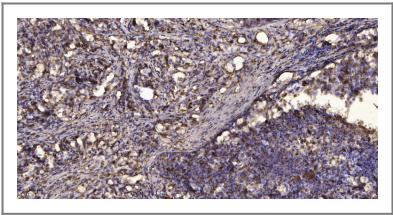
Tissue specificity Expressed in heart, skeletal muscle, liver, lung, bone marrow fibroblast, pancreas and placenta.

Function developmental stage:Expressed during cranofacial development as well as in heart.,Function:May be a growth regulator and have a role in specifying neural systems involved in processing somatosensory information, as well as in face and body structure formation.,similarity:Belongs to the paired homeobox family. Bicoid subfamily.,similarity:Contains 1 homeobox DNA-binding domain.,similarity:Contains 1 OAR domain.,tissue specificity:Expressed in heart, skeletal muscle, liver, lung, bone marrow fibroblast, pancreas and placenta.,

Validation Data



Western blot analysis of lysates from Hela cells, primary antibody was diluted at 1:1000, 4°over night



Immunohistochemical analysis of paraffin-embedded human Squamous cell carcinoma of lung. 1, Antibody was diluted at 1:200(4° overnight). 2, Tris-EDTA,pH9.0 was used for antigen retrieval. 3,Secondary antibody was diluted at 1:200(room temperature, 45min).

Contact information

Orders: [order@immunoway.com](mailto:order@immunoway.com)  
Support: [tech@immunoway.com](mailto:tech@immunoway.com)  
Telephone: 877-594-3616 (Toll Free), 408-747-0185  
Website: <http://www.immunoway.com>  
Address: 2200 Ringwood Ave San Jose, CA 95131 USA



Please scan the QR code  
to access additional  
product information:  
**SHOX2 Rabbit pAb**

---

For Research Use Only. Not for Use in Diagnostic Procedures.

[Antibody](#) | [ELISA Kits](#) | [Protein](#) | [Reagents](#)