

TYB10 Rabbit pAb

CatalogNo: YT6361

Key Features

Host Species

- Rabbit

Reactivity

- Human, Mouse, Rat

Applications

- IHC, IF

MW

- 5kD (Calculated)

Isotype

- IgG

Recommended Dilution Ratios

IHC 1:50-200

IF 1:50-200

Storage

Storage* -15°C to -25°C/1 year (Do not lower than -25°C)

Formulation Liquid in PBS containing 50% glycerol, 0.5% BSA and 0.02% sodium azide.

Basic Information

Clonality Polyclonal

Immunogen Information

Immunogen Synthesized peptide derived from human TYB10 AA range: 1-24

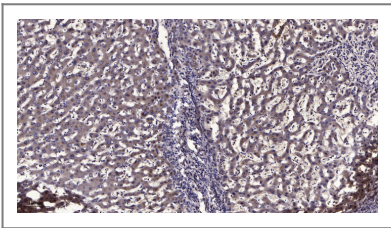
Specificity This antibody detects endogenous levels of TYB10 at Human/Mouse/Rat

Target Information

Gene name TMSB10 PTMB10 THYB10

Protein Name	TYB10		
	Organism	Gene ID	UniProt ID
	Human	9168;	P63313;
	Mouse	19240;	Q6ZWY8;
	Rat	100364435;	P63312;
Cellular Localization	Cytoplasm, cytoskeleton.		
Function	developmental stage:Found to decrease dramatically after birth.,Function:Plays an important role in the organization of the cytoskeleton. Binds to and sequesters actin monomers (G actin) and therefore inhibits actin polymerization.,similarity:Belongs to the thymosin beta family.,		

| Validation Data



Immunohistochemical analysis of paraffin-embedded human liver cancer. 1, Antibody was diluted at 1:200(4° overnight). 2, Tris-EDTA,pH9.0 was used for antigen retrieval. 3,Secondary antibody was diluted at 1:200(room temperature, 45min).

| Contact information

Orders: order@immunoway.com
 Support: tech@immunoway.com
 Telephone: 877-594-3616 (Toll Free), 408-747-0185
 Website: <http://www.immunoway.com>
 Address: 2200 Ringwood Ave San Jose, CA 95131 USA



Please scan the QR code to access additional product information:
TYB10 Rabbit pAb