

## UBE2B Rabbit pAb

CatalogNo: YT6329

### | Key Features

#### Host Species

- Rabbit

#### Reactivity

- Human, Mouse, Rat

#### Applications

- WB

#### MW

- 17kD (Calculated)

#### Isotype

- IgG

### | Recommended Dilution Ratios

WB 1:500-2000

### | Storage

**Storage\*** -15°C to -25°C/1 year (Do not lower than -25°C)

**Formulation** Liquid in PBS containing 50% glycerol, 0.5% BSA and 0.02% sodium azide.

### | Basic Information

**Clonality** Polyclonal

### | Immunogen Information

**Immunogen** Synthesized peptide derived from human UBE2B AA range: 23-73

**Specificity** This antibody detects endogenous levels of UBE2B at Human/Mouse/Rat

### | Target Information

**Gene name** UBE2B RAD6B

**Protein Name**

UBE2B

Organism	Gene ID	UniProt ID
Human	<a href="#">7320;</a>	<a href="#">P63146;</a>
Mouse	<a href="#">22210;</a>	<a href="#">P63147;</a>
Rat	<a href="#">81816;</a>	<a href="#">P63149;</a>

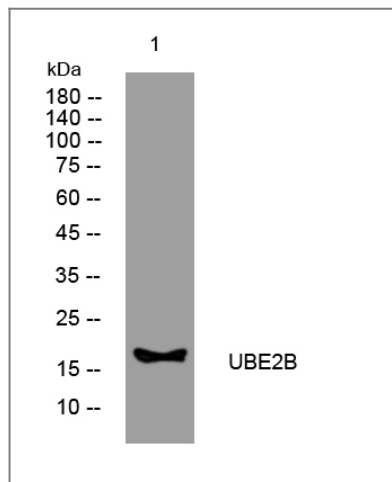
**Cellular Localization**

Cell membrane . Nucleus . In peripheral neurons, expressed both at the plasma membrane and in nuclei. .

**Function**

Catalytic activity:ATP + ubiquitin + protein lysine = AMP + diphosphate + protein N-ubiquityllysine.,Function:Catalyzes the covalent attachment of ubiquitin to other proteins. Required for postreplication repair of UV-damaged DNA. Associates to the E3 ligase RAD18 to form the UBE2B-RAD18 ubiquitin ligase complex involved in mono-ubiquitination of DNA-associated PCNA on 'Lys-164'. May be involved in neurite outgrowth.,pathway:Protein modification; protein ubiquitination.,similarity:Belongs to the ubiquitin-conjugating enzyme family.,subcellular location:In peripheral neurons, expressed both at the plasma membrane and in nuclei.,subunit:Interacts with RAD18 and UBR2.,

## Validation Data



Western blot analysis of lysates from A549 cells, primary antibody was diluted at 1:1000, 4° over night

## Contact information

Orders: [order@immunoway.com](mailto:order@immunoway.com)  
Support: [tech@immunoway.com](mailto:tech@immunoway.com)  
Telephone: 877-594-3616 (Toll Free), 408-747-0185  
Website: <http://www.immunoway.com>  
Address: 2200 Ringwood Ave San Jose, CA 95131 USA



Please scan the QR code to access additional product information:  
**UBE2B Rabbit pAb**

