

## DGLB Rabbit pAb

CatalogNo: YT6321

### Key Features

#### Host Species

- Rabbit

#### Reactivity

- Human, Mouse, Rat

#### Applications

- WB

#### MW

- 74kD (Calculated)

#### Isotype

- IgG

### Storage

**Storage\*** -15°C to -25°C/1 year (Do not lower than -25°C)

**Formulation** Liquid in PBS containing 50% glycerol, 0.5% BSA and 0.02% sodium azide.

### Recommended Dilution Ratios

**WB 1:500-2000**

### Basic Information

**Clonality** Polyclonal

### Immunogen Information

**Immunogen** Synthesized peptide derived from human DGLB AA range: 616-666

**Specificity** This antibody detects endogenous levels of DGLB at Human/Mouse/Rat

### Target Information

**Gene name** DAGLB

**Protein Name** DGLB

Organism	Gene ID	UniProt ID
Human	<a href="#">221955</a> ;	<a href="#">Q8NCG7</a> ;
Mouse	<a href="#">231871</a> ;	<a href="#">Q91WC9</a> ;
Rat		<a href="#">P0C1S9</a> ;

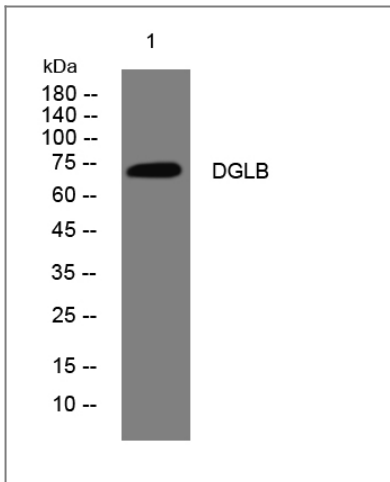
**Cellular Localization**

Cell membrane ; Multi-pass membrane protein .

**Function**

cofactor:Calcium.,enzyme regulation:Inhibited by p-hydroxy-mercuri-benzoate and HgCl(2), but not to PMSF. Also inhibited by RHC80267, a drug that blocks 2-AG formation.,Function:Catalyzes the hydrolysis of diacylglycerol (DAG) to 2-arachidonoyl-glycerol (2-AG), the most abundant endocannabinoid in tissues. Required for axonal growth during development and for retrograde synaptic signaling at mature synapses.,similarity:Belongs to the AB hydrolase superfamily. Lipase family.,

## Validation Data



Western blot analysis of lysates from HeLa cells, primary antibody was diluted at 1:1000, 4° over night

## Contact information

Orders: [order@immunoway.com](mailto:order@immunoway.com)  
Support: [tech@immunoway.com](mailto:tech@immunoway.com)  
Telephone: 877-594-3616 (Toll Free), 408-747-0185  
Website: <http://www.immunoway.com>  
Address: 2200 Ringwood Ave San Jose, CA 95131 USA



Please scan the QR code to access additional product information:  
**DGLB Rabbit pAb**

