

ADR1 Rabbit pAb

CatalogNo: YT6316

| Key Features

Host Species

- Rabbit

Reactivity

- Human, Mouse

Applications

- WB

MW

- 41kD (Calculated)

Isotype

- IgG

| Recommended Dilution Ratios

WB 1:500-2000

| Storage

Storage*

-15°C to -25°C/1 year (Do not lower than -25°C)

Formulation

Liquid in PBS containing 50% glycerol, 0.5% BSA and 0.02% sodium azide.

| Basic Information

Clonality

Polyclonal

| Immunogen Information

Immunogen

Synthesized peptide derived from human ADR1 AA range: 277-327

Specificity

This antibody detects endogenous levels of ADR1 at Human/Mouse

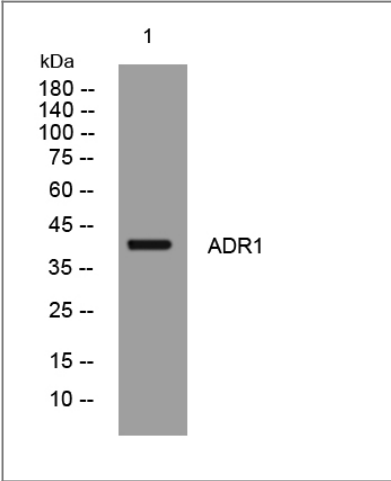
| Target Information

Gene name

ADIPOR1 PAQR1 TESBP1A CGI-45

Protein Name	ADR1		
	Organism	Gene ID	UniProt ID
	Human	51094;	Q96A54;
	Mouse	72674;	Q91VH1;
Cellular Localization	Cell membrane ; Multi-pass membrane protein . Localized to the cell membrane and intracellular organelles. .		
Tissue specificity	Widely expressed (PubMed:16044242). Highly expressed in heart and skeletal muscle (PubMed:12802337). Expressed at intermediate level in brain, spleen, kidney, liver, placenta, lung and peripheral blood leukocytes (PubMed:12802337). Weakly expressed in colon, thymus and small intestine (PubMed:12802337).		
Function	Function:Receptor for globular and full-length adiponectin (APM1), an essential hormone secreted by adipocytes that acts as an antidiabetic. Probably involved in metabolic pathways that regulate lipid metabolism such as fatty acid oxidation. Mediates increased AMPK, PPARA ligand activity, fatty acid oxidation and glucose uptake by adiponectin. Has some high-affinity receptor for globular adiponectin but low-affinity receptor for full-length adiponectin.,similarity:Belongs to the ADIPOR family.,subcellular location:Localized to the cell membrane and intracellular organelles.,subunit:May form homo and heteromultimers.,tissue specificity:Widely expressed. Highly expressed in skeletal muscle. Expressed at intermediate level in brain, heart, spleen, kidney, liver, placenta, lung and peripheral blood leukocytes. Weakly expressed in colon, thymus and small intestine.,		

Validation Data



Western blot analysis of lysates from AD293 cells, primary antibody was diluted at 1:1000, 4°over night

Contact information

Orders: order@immunoway.com
Support: tech@immunoway.com
Telephone: 877-594-3616 (Toll Free), 408-747-0185
Website: http://www.immunoway.com
Address: 2200 Ringwood Ave San Jose, CA 95131 USA



Please scan the QR code
to access additional
product information:
ADR1 Rabbit pAb

For Research Use Only. Not for Use in Diagnostic Procedures.

[Antibody](#) | [ELISA Kits](#) | [Protein](#) | [Reagents](#)