

ITF Rabbit pAb

CatalogNo: YT6276

| Key Features

Host Species

- Rabbit

Reactivity

- Human,Rat,Mouse,

Applications

- IHC,ELISA

Isotype

- IgG

| Recommended Dilution Ratios

IHC 1:50-200

ELISA(peptide)1:5000-20000

| Storage

Storage* -15°C to -25°C/1 year(Do not lower than -25°C)

Formulation Liquid in PBS containing 50% glycerol, 0.5% BSA and 0.02% sodium azide.

| Basic Information

Clonality Polyclonal

| Immunogen Information

Immunogen Synthesized peptide derived from human ITF Polyclonal AA range: 1-50

Specificity This antibody detects endogenous levels of human ITF Polyclonal

| Target Information

Gene name TFF3 ITF TFI

Protein Name

ITF Polyclonal

Organism

Human

Gene ID[7033;](#)**UniProt ID**[Q07654;](#)**Cellular
Localization**

Secreted, extracellular space, extracellular matrix . Cytoplasm .

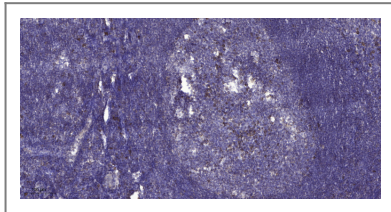
Tissue specificity

Expressed in goblet cells of the intestines and colon (at protein level). Expressed by goblet cells of small and large intestinal epithelia and also by the uterus. Also expressed in the hypothalamus where it is detected in paraventricular, periventricular and supraoptic nuclei (at protein level).

Function

Function:Involved in the maintenance and repair of the intestinal mucosa. Promotes the mobility of epithelial cells in healing processes (motogen).,similarity:Contains 1 P-type (trefoil) domain.,subunit:Monomer. Homodimer; disulfide-linked.,tissue specificity:Expressed in goblet cells of the intestines and colon (at protein level). Expressed by goblet cells of small and large intestinal epithelia and also by the uterus.,

| Validation Data



Immunohistochemical analysis of paraffin-embedded human tonsil. 1, Antibody was diluted at 1:200(4° overnight). 2, Tris-EDTA,pH9.0 was used for antigen retrieval. 3,Secondary antibody was diluted at 1:200(room temperature, 30min).

| Contact information

Orders: order@immunoway.com
Support: tech@immunoway.com
Telephone: 877-594-3616 (Toll Free), 408-747-0185
Website: <http://www.immunoway.com>
Address: 2200 Ringwood Ave San Jose, CA 95131 USA



Please scan the QR code
to access additional
product information:
ITF Rabbit pAb

For Research Use Only. Not for Use in Diagnostic Procedures.

[Antibody](#) | [ELISA Kits](#) | [Protein](#) | [Reagents](#)