

S100G Rabbit pAb

CatalogNo: YT6267

| Key Features

Host Species

- Rabbit

Reactivity

- Human, Mouse, Rat

Applications

- IHC, ELISA

Isotype

- IgG

| Recommended Dilution Ratios

IHC 1:50-200

ELISA(peptide) 1:5000-20000

| Storage

Storage* -15°C to -25°C/1 year (Do not lower than -25°C)

Formulation Liquid in PBS containing 50% glycerol, 0.5% BSA and 0.02% sodium azide.

| Basic Information

Clonality Polyclonal

| Immunogen Information

Immunogen Synthesized peptide derived from human S100G AA range: 1-80

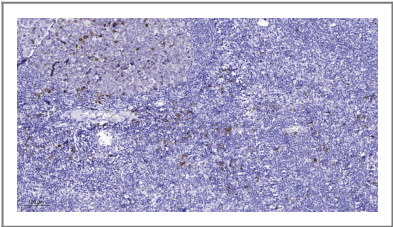
Specificity This antibody detects endogenous levels of human S100G

| Target Information

Gene name S100G CABP9K CALB3 S100D

Protein Name	S100G		
	Organism	Gene ID	UniProt ID
	Human	795 ;	P29377 ;
Cellular Localization	basolateral plasma membrane,apical plasma membrane,		
Function	similarity:Belongs to the S-100 family.,similarity:Contains 2 EF-hand domains.,		

Validation Data



Immunohistochemical analysis of paraffin-embedded human tonsil. 1, Antibody was diluted at 1:200(4° overnight). 2, Tris-EDTA,pH9.0 was used for antigen retrieval. 3,Secondary antibody was diluted at 1:200(room temperature, 45min).

Contact information

Orders: order@immunoway.com
Support: tech@immunoway.com
Telephone: 877-594-3616 (Toll Free), 408-747-0185
Website: <http://www.immunoway.com>
Address: 2200 Ringwood Ave San Jose, CA 95131 USA



Please scan the QR code to access additional product information:
S100G Rabbit pAb

For Research Use Only. Not for Use in Diagnostic Procedures.

[Antibody](#) | [ELISA Kits](#) | [Protein](#) | [Reagents](#)