

RPAB4 Rabbit pAb

CatalogNo: YT6245

| Key Features

Host Species

- Rabbit

Reactivity

- Human, Mouse

Applications

- IHC, ELISA

Isotype

- IgG

| Recommended Dilution Ratios

IHC 1:50-200

ELISA(peptide) 1:5000-20000

| Storage

Storage* -15°C to -25°C/1 year (Do not lower than -25°C)

Formulation Liquid in PBS containing 50% glycerol, 0.5% BSA and 0.02% sodium azide.

| Basic Information

Clonality Polyclonal

| Immunogen Information

Immunogen Synthesized peptide derived from human RPAB4 AA range: 1-50

Specificity This antibody detects endogenous levels of human RPAB4

| Target Information

Gene name POLR2K

Protein Name RPAB4

Organism

Human

Gene ID

[5440;](#)

UniProt ID

[P53803;](#)

**Cellular
Localization**

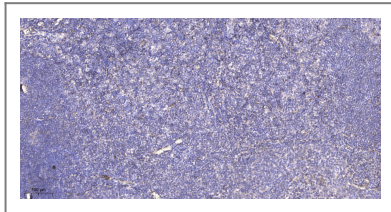
Nucleus .

Tissue specificity Ovary,Placenta,

Function

Function:DNA-dependent RNA polymerase catalyzes the transcription of DNA into RNA using the four ribonucleoside triphosphates as substrates. Common component of RNA polymerases I, II and III which synthesize ribosomal RNA precursors, mRNA precursors and many functional non-coding RNAs, and a small RNAs, such as 5S rRNA and tRNAs, respectively.,similarity:Belongs to the archaeal rpoP/eukaryotic RPC10 RNA polymerase subunit family.,subunit:Component of the RNA polymerase I (Pol I), RNA polymerase II (Pol II) and RNA polymerase III (Pol III) complexes consisting of at least 13, 12 and 17 subunits, respectively.,

Validation Data



Immunohistochemical analysis of paraffin-embedded human tonsil. 1, Antibody was diluted at 1:200(4° overnight). 2, Tris-EDTA,pH9.0 was used for antigen retrieval. 3,Secondary antibody was diluted at 1:200(room temperature, 45min).

Contact information

Orders: order@immunoway.com
Support: tech@immunoway.com
Telephone: 877-594-3616 (Toll Free), 408-747-0185
Website: <http://www.immunoway.com>
Address: 2200 Ringwood Ave San Jose, CA 95131 USA



Please scan the QR code to access additional product information:
RPAB4 Rabbit pAb

For Research Use Only. Not for Use in Diagnostic Procedures.

[Antibody](#) | [ELISA Kits](#) | [Protein](#) | [Reagents](#)