

Cyclin T2 Rabbit pAb

CatalogNo: YT6222

Key Features

Host Species

- Rabbit

Reactivity

- Human, Mouse, Rat

Applications

- IHC, IF, WB

MW

- 73kD (Observed)

Isotype

- IgG

Recommended Dilution Ratios

IHC 1:50-200

WB 1:500-2000

IF 1:50-200

Storage

Storage*

-15°C to -25°C/1 year (Do not lower than -25°C)

Formulation

Liquid in PBS containing 50% glycerol, 0.5% BSA and 0.02% sodium azide.

Basic Information

Clonality

Polyclonal

Immunogen Information

Immunogen

Synthesized peptide derived from human Cyclin T2 AA range: 510-590

Specificity

This antibody detects endogenous levels of human Cyclin T2

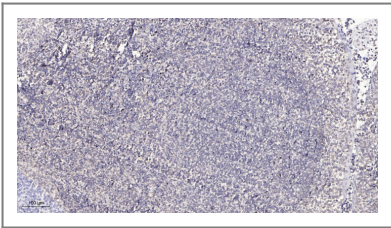
Target Information

Gene name

CCNT2

Protein Name	Cyclin T2		
	Organism	Gene ID	UniProt ID
	Human	905 ;	O60583 ;
Cellular Localization	Cytoplasm, perinuclear region . Nucleus . Nucleus in differentiating cells. .		
Tissue specificity	Ubiquitously expressed.		
Function	Function:Regulatory subunit of the cyclin-dependent kinase pair (CDK9/cyclin T) complex, also called positive transcription elongation factor B (P-TEFb), which is proposed to facilitate the transition from abortive to production elongation by phosphorylating the CTD (carboxy-terminal domain) of the large subunit of RNA polymerase II (RNAP II).,similarity:Belongs to the cyclin family. Cyclin C subfamily.,subunit:Associates with CDK9 to form P-TEFb. Isoform A and isoform B interact with HIV-2 and SIV Tat. Does not bind efficiently to the transactivation domain of the HIV-1 Tat.,tissue specificity:Ubiquitously expressed.,		

| Validation Data



Immunohistochemical analysis of paraffin-embedded human tonsil. 1, Antibody was diluted at 1:200(4° overnight). 2, Tris-EDTA,pH9.0 was used for antigen retrieval. 3,Secondary antibody was diluted at 1:200(room temperature, 30min).

| Contact information

Orders: order@immunoway.com
Support: tech@immunoway.com
Telephone: 877-594-3616 (Toll Free), 408-747-0185
Website: http://www.immunoway.com
Address: 2200 Ringwood Ave San Jose, CA 95131 USA



Please scan the QR code to access additional product information:
Cyclin T2 Rabbit pAb