

RAD1 Rabbit pAb

CatalogNo: YT6220

Key Features

Host Species

- Rabbit

Reactivity

- Human, Mouse

Applications

- IHC, IF, WB

MW

- 32kD (Observed)

Isotype

- IgG

Recommended Dilution Ratios

IHC 1:50-200

WB 1:500-2000

IF 1:50-200

Storage

Storage* -15°C to -25°C/1 year (Do not lower than -25°C)

Formulation Liquid in PBS containing 50% glycerol, 0.5% BSA and 0.02% sodium azide.

Basic Information

Clonality Polyclonal

Immunogen Information

Immunogen Synthesized peptide derived from human RAD1

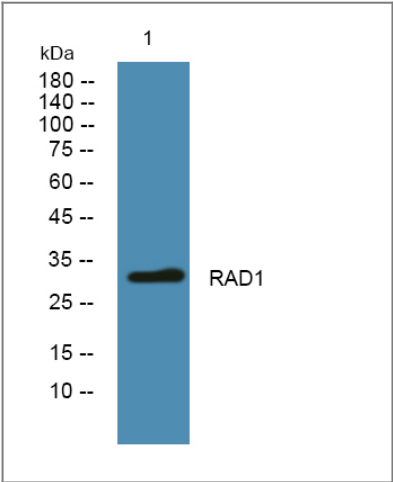
Specificity This antibody detects endogenous levels of human RAD1

Target Information

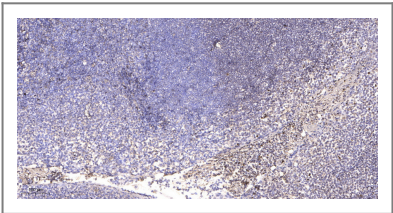
Gene name RAD1 REC1

Protein Name	RAD1		
	Organism	Gene ID	UniProt ID
	Human	5810;	O60671;
Cellular Localization	Nucleus .		
Tissue specificity	Expressed in testis, uterus, bladder, spleen, ovaries, lung, brain and muscle (at protein level).		
Function	<p>Catalytic activity:Exonucleolytic cleavage in the 3'- to 5'-direction to yield nucleoside 5'-phosphates.,Function:Component of the 9-1-1 cell-cycle checkpoint response complex that plays a major role in DNA repair. The 9-1-1 complex is recruited to DNA lesion upon damage by the RAD17-replication factor C (RFC) clamp loader complex. Acts then as a sliding clamp platform on DNA for several proteins involved in long-patch base excision repair (LP-BER). The 9-1-1 complex stimulates DNA polymerase beta (POLB) activity by increasing its affinity for the 3'-OH end of the primer-template and stabilizes POLB to those sites where LP-BER proceeds; endonuclease FEN1 cleavage activity on substrates with double, nick, or gap flaps of distinct sequences and lengths; and DNA ligase I (LIG1) on long-patch base excision repair substrates. Isoform 1 possesses 3'->5' double stranded DNA exonuclease activity.,similarity:Belongs to the rad1 family.,subunit:Component of the toroidal 9-1-1 (RAD9-RAD1-HUS1) complex, composed of RAD9A, RAD1 and HUS1. The 9-1-1 complex associates with LIG1, POLB, FEN1, RAD17, HDAC1, RPA1 and RPA2. The 9-1-1 complex associates with the RAD17-RFC complex. RAD1 interacts with POLB, FEN1, HUS1, HUS1B, RAD9A and RAD9B.,tissue specificity:Expressed in testis, uterus, bladder, spleen, ovaries, lung, brain and muscle (at protein level).,</p>		

| Validation Data



Western blot analysis of lysates from PC12 cells, primary antibody was diluted at 1:1000, 4°over night



Immunohistochemical analysis of paraffin-embedded human tonsil. 1, Antibody was diluted at 1:200(4° overnight). 2, Tris-EDTA,pH9.0 was used for antigen retrieval. 3,Secondary antibody was diluted at 1:200(room temperature, 45min).

| Contact information

Orders: order@immunoway.com
Support: tech@immunoway.com
Telephone: 877-594-3616 (Toll Free), 408-747-0185
Website: <http://www.immunoway.com>
Address: 2200 Ringwood Ave San Jose, CA 95131 USA



Please scan the QR code
to access additional
product information:
RAD1 Rabbit pAb

For Research Use Only. Not for Use in Diagnostic Procedures.

[Antibody](#) | [ELISA Kits](#) | [Protein](#) | [Reagents](#)