

Keratin 77 Rabbit pAb

CatalogNo: YT6219

| Key Features

Host Species

- Rabbit

Reactivity

- Human,Rat,Mouse,

Applications

- IHC,IF,WB

MW

- 61kD (Observed)

Isotype

- IgG

| Recommended Dilution Ratios

IHC 1:50-200

WB 1:500-2000

IF 1:50-200

| Storage

Storage* -15°C to -25°C/1 year(Do not lower than -25°C)

Formulation Liquid in PBS containing 50% glycerol, 0.5% BSA and 0.02% sodium azide.

| Basic Information

Clonality Polyclonal

| Immunogen Information

Immunogen Synthesized peptide derived from human Keratin 77

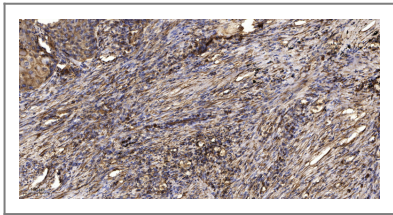
Specificity This antibody detects endogenous levels of human Keratin 77

| Target Information

Gene name KRT77 KRT1B

Protein Name	Keratin 77		
	Organism	Gene ID	UniProt ID
	Human	374454;	Q7Z794;
Cellular Localization	cytoskeleton,intermediate filament,keratin filament,extracellular exosome,		
Tissue specificity	Expressed exclusively in skin.		
Function	miscellaneous:There are two types of cytoskeletal and microfibrillar keratin: I (acidic; 40-55 kDa) and II (neutral to basic; 56-70 kDa).,PTM:Undergoes deimination of some arginine residues (citrullination).,similarity:Belongs to the intermediate filament family.,tissue specificity:Expressed exclusively in skin.,		

| Validation Data



Immunohistochemical analysis of paraffin-embedded human Squamous cell carcinoma of lung. 1, Antibody was diluted at 1:200(4° overnight). 2, Tris-EDTA,pH9.0 was used for antigen retrieval. 3,Secondary antibody was diluted at 1:200(room temperature, 45min).

| Contact information

Orders: order@immunoway.com
Support: tech@immunoway.com
Telephone: 877-594-3616 (Toll Free), 408-747-0185
Website: <http://www.immunoway.com>
Address: 2200 Ringwood Ave San Jose, CA 95131 USA



Please scan the QR code to access additional product information:
Keratin 77 Rabbit pAb

For Research Use Only. Not for Use in Diagnostic Procedures.

[Antibody](#) | [ELISA Kits](#) | [Protein](#) | [Reagents](#)