

## TRY2 Rabbit pAb

CatalogNo: YT6185

### Key Features

#### Host Species

- Rabbit

#### Reactivity

- Human, Mouse, Rat

#### Applications

- IHC, IF, WB

#### MW

- 27kD (Observed)

#### Isotype

- IgG

### Storage

**Storage\*** -15°C to -25°C/1 year (Do not lower than -25°C)

**Formulation** Liquid in PBS containing 50% glycerol, 0.5% BSA and 0.02% sodium azide.

### Recommended Dilution Ratios

IHC 1:50-200

WB 1:500-2000

IF 1:50-200

### Basic Information

**Clonality** Polyclonal

### Immunogen Information

**Immunogen** Synthesized peptide derived from human TRY2

**Specificity** This antibody detects endogenous levels of human TRY2

### Target Information

**Gene name** PRSS2 TRY2 TRYP2

**Protein Name** Trypsin-2 (Anionic trypsinogen) (Serine protease 2) (Trypsin II)

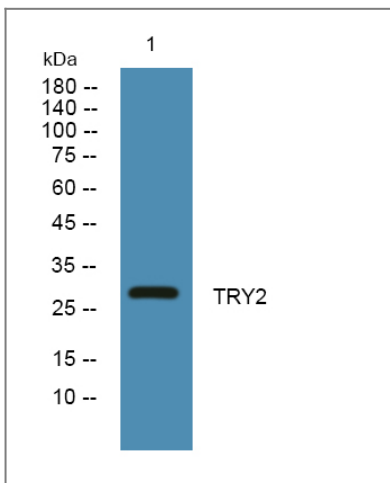
Organism	Gene ID	UniProt ID
Human	<a href="#">5645;</a>	<a href="#">P07478;</a>
Mouse		<a href="#">P07146;</a>
Rat		<a href="#">P00763;</a>

**Cellular Localization** Secreted, extracellular space.

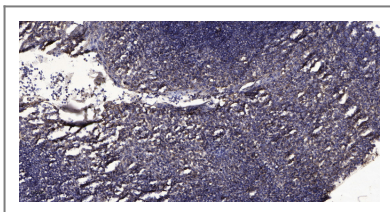
**Tissue specificity** Expressed in Paneth cells, at the base of small intestinal crypts.

**Function** Catalytic activity:Preferential cleavage: Arg-|-Xaa, Lys-|-Xaa.,cofactor:Binds 1 calcium ion per subunit.,PTM:Sulfated on tyrosine.,similarity:Belongs to the peptidase S1 family.,similarity:Contains 1 peptidase S1 domain.,

## Validation Data



Western blot analysis of lysates from Jurkat cells, primary antibody was diluted at 1:1000, 4° over night



Immunohistochemical analysis of paraffin-embedded human tonsil. 1, Antibody was diluted at 1:200(4° overnight). 2, Tris-EDTA,pH9.0 was used for antigen retrieval. 3,Secondary antibody was diluted at 1:200(room temperature, 30min).

## Contact information

Orders: order@immunoway.com  
Support: tech@immunoway.com  
Telephone: 877-594-3616 (Toll Free), 408-747-0185  
Website: http://www.immunoway.com  
Address: 2200 Ringwood Ave San Jose, CA 95131 USA



Please scan the QR code  
to access additional  
product information:  
**TRY2 Rabbit pAb**

---

For Research Use Only. Not for Use in Diagnostic Procedures.

[Antibody](#) | [ELISA Kits](#) | [Protein](#) | [Reagents](#)