

ST2A1 Rabbit pAb

CatalogNo: YT6173

| Key Features

Host Species

- Rabbit

Reactivity

- Human,Rat,Mouse,

Applications

- WB,IHC,IF,ELISA

MW

- 34kD (Observed)

Isotype

- IgG

| Recommended Dilution Ratios

WB 1:500-1:2000

IHC 1:100-1:300

ELISA 1:40000

IF 1:50-200

| Storage

Storage*

-15°C to -25°C/1 year(Do not lower than -25°C)

Formulation

Liquid in PBS containing 50% glycerol, 0.5% BSA and 0.02% sodium azide.

| Basic Information

Clonality

Polyclonal

| Immunogen Information

Immunogen

Synthesized peptide derived from human ST2A1

Specificity

This antibody detects endogenous levels of human ST2A1

| Target Information

Gene name SULT2A1 HST STD

Protein Name ST2A1

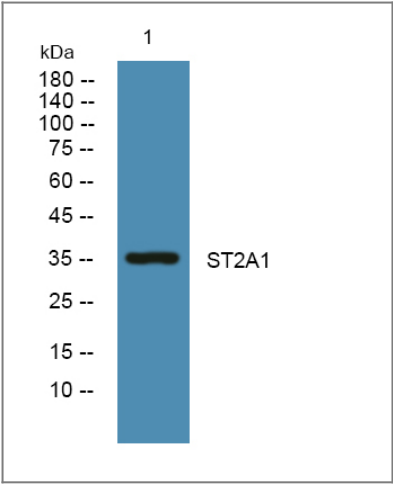
Organism	Gene ID	UniProt ID
Human	6822;	Q06520;

Cellular Localization Cytoplasm .

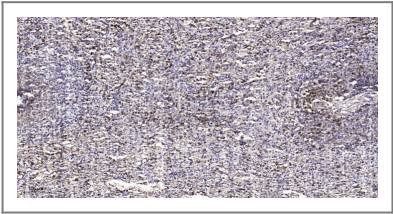
Tissue specificity Liver, adrenal and at lower level in the kidney. Is present in human fetus in higher level in the adrenal than the liver and the kidney.

Function Catalytic activity:3'-phosphoadenylyl sulfate + glycolithocholate = adenosine 3',5'-bisphosphate + glycolithocholate 3-sulfate.,Catalytic activity:3'-phosphoadenylyl sulfate + tauroolithocholate = adenosine 3',5'-bisphosphate + tauroolithocholate sulfate.,Function:Catalyzes the sulfation of steroids and bile acids in the liver and adrenal glands.,miscellaneous:Estrogens present in maternal circulation is predominantly derived from fetal dehydroepiandrosterone sulfate which is hydrolyzed and metabolized to estrogens in placenta.,PTM:The N-terminus is blocked.,similarity:Belongs to the sulfotransferase 1 family.,subunit:Homodimer.,tissue specificity:Liver, adrenal and at lower level in the kidney. Is present in human fetus in higher level in the adrenal than the liver and the kidney.,

Validation Data



Western blot analysis of lysates from KB cells, primary antibody was diluted at 1:1000, 4° over night



Immunohistochemical analysis of paraffin-embedded human spleen tissue. 1,primary Antibody was diluted at 1:200(4° overnight). 2, Sodium citrate pH 6.0 was used for antigen retrieval(>98°C,20min). 3,Secondary antibody was diluted at 1:200

Contact information

Orders: order@immunoway.com
Support: tech@immunoway.com
Telephone: 877-594-3616 (Toll Free), 408-747-0185
Website: http://www.immunoway.com
Address: 2200 Ringwood Ave San Jose, CA 95131 USA



Please scan the QR code
to access additional
product information:
ST2A1 Rabbit pAb

For Research Use Only. Not for Use in Diagnostic Procedures.

[Antibody](#) | [ELISA Kits](#) | [Protein](#) | [Reagents](#)