

RPL35 Rabbit pAb

CatalogNo: YT6147

Key Features

Host Species

- Rabbit

Reactivity

- Human, Mouse, Rat

Applications

- WB, ELISA

MW

- 16kD (Observed)

Isotype

- IgG

Recommended Dilution Ratios

WB 1:500-2000

ELISA 1:10000-20000

Storage

Storage* -15°C to -25°C/1 year (Do not lower than -25°C)

Formulation Liquid in PBS containing 50% glycerol, 0.5% BSA and 0.02% sodium azide.

Basic Information

Clonality Polyclonal

Immunogen Information

Immunogen Synthesized peptide derived from human RPL35 Polyclonal

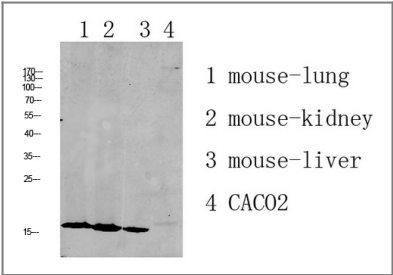
Specificity This antibody detects endogenous levels of RPL35.

Target Information

Gene name RPL35

Protein Name	60S ribosomal protein L35		
	Organism	Gene ID	UniProt ID
	Human	11224;	P42766;
	Mouse	66489;	Q6Z WV7;
	Rat	296709;	P17078;
Cellular Localization	nucleolus,cytoplasm,cytosol,ribosome,membrane,cytosolic large ribosomal subunit,		
Tissue specificity	Brain,Lung,Muscle,Prostate,		
Function	similarity:Belongs to the ribosomal protein L29P family.,		

Validation Data



Western blot analysis of various lysate, antibody was diluted at 1000. Secondary antibody(catalog#:RS0002) was diluted at 1:20000

Contact information

Orders: order@immunoway.com
 Support: tech@immunoway.com
 Telephone: 877-594-3616 (Toll Free), 408-747-0185
 Website: <http://www.immunoway.com>
 Address: 2200 Ringwood Ave San Jose, CA 95131 USA



Please scan the QR code to access additional product information:
RPL35 Rabbit pAb

For Research Use Only. Not for Use in Diagnostic Procedures.

[Antibody](#) | [ELISA Kits](#) | [Protein](#) | [Reagents](#)