

## DUSP4 Rabbit pAb

CatalogNo: YT6141

### Key Features

#### Host Species

- Rabbit

#### Reactivity

- Human, Mouse, Rat

#### Applications

- WB, ELISA

#### MW

- 44kD (Observed)

#### Isotype

- IgG

### Recommended Dilution Ratios

**WB 1:500-2000**

**ELISA 1:10000-20000**

### Storage

**Storage\*** -15°C to -25°C/1 year (Do not lower than -25°C)

**Formulation** Liquid in PBS containing 50% glycerol, 0.5% BSA and 0.02% sodium azide.

### Basic Information

**Clonality** Polyclonal

### Immunogen Information

**Immunogen** Synthesized peptide derived from human DUSP4 Polyclonal

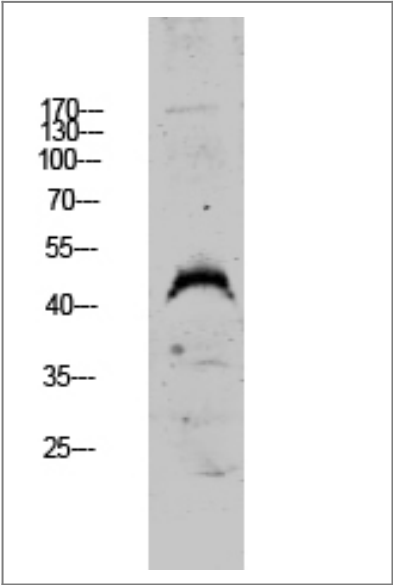
**Specificity** This antibody detects endogenous levels of DUSP4.

### Target Information

**Gene name** DUSP4 MKP2 VH2

<b>Protein Name</b>	Dual specificity protein phosphatase 4 (Dual specificity protein phosphatase hVH2) (Mitogen-activated protein kinase phosphatase 2) (MAP kinase phosphatase 2) (MKP-2)		
	<b>Organism</b>	<b>Gene ID</b>	<b>UniProt ID</b>
	Human	<a href="#">1846;</a>	<a href="#">Q13115;</a>
	Mouse	<a href="#">319520;</a>	<a href="#">Q8BFV3;</a>
	Rat	<a href="#">60587;</a>	<a href="#">Q62767;</a>
<b>Cellular Localization</b>	Nucleus .		
<b>Tissue specificity</b>	Skin,Uterus,		
<b>Function</b>	Catalytic activity:A phosphoprotein + H(2)O = a protein + phosphate.,Catalytic activity:Protein tyrosine phosphate + H(2)O = protein tyrosine + phosphate.,Function:Regulates mitogenic signal transduction by dephosphorylating both Thr and Tyr residues on MAP kinases ERK1 and ERK2.,similarity:Belongs to the protein-tyrosine phosphatase family. Non-receptor class dual specificity subfamily.,similarity:Contains 1 rhodanese domain.,similarity:Contains 1 tyrosine-protein phosphatase domain.,		

| Validation Data



Western blot analysis of A549 lysate, antibody was diluted at 1000. Secondary antibody(catalog#:RS0002) was diluted at 1:20000

| Contact information

Orders: order@immunoway.com  
Support: tech@immunoway.com  
Telephone: 877-594-3616 (Toll Free), 408-747-0185  
Website: <http://www.immunoway.com>  
Address: 2200 Ringwood Ave San Jose, CA 95131 USA



Please scan the QR code  
to access additional  
product information:  
**DUSP4 Rabbit pAb**

---

For Research Use Only. Not for Use in Diagnostic Procedures.

[Antibody](#) | [ELISA Kits](#) | [Protein](#) | [Reagents](#)