

## AVP Receptor V2 Rabbit pAb

CatalogNo: YT6077

### Key Features

#### Host Species

- Rabbit

#### Reactivity

- Human, Mouse

#### Applications

- WB, ELISA

#### MW

- 57kD (Observed)

#### Isotype

- IgG

### Recommended Dilution Ratios

WB 1:500-2000

ELISA 1:10000-20000

### Storage

**Storage\*** -15°C to -25°C/1 year (Do not lower than -25°C)

**Formulation** Liquid in PBS containing 50% glycerol, 0.5% BSA and 0.02% sodium azide.

### Basic Information

**Clonality** Polyclonal

### Immunogen Information

**Immunogen** Synthesized peptide derived from human AVP Receptor V2. at AA range: 1-50

**Specificity** AVP Receptor V2 Polyclonal Antibody detects endogenous levels of AVP Receptor V2

### Target Information

**Gene name** AVPR2

**Protein Name** AVP Receptor V2

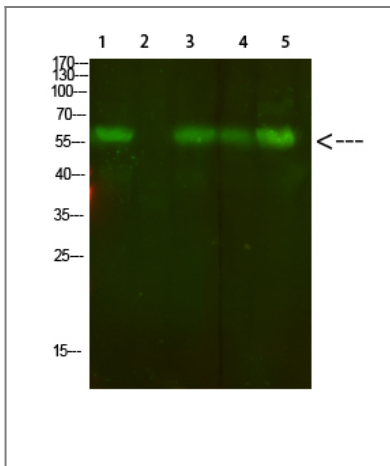
Organism	Gene ID	UniProt ID
Human	<a href="#">554;</a>	<a href="#">P30518;</a>
Mouse	<a href="#">12000;</a>	<a href="#">O88721;</a>

**Cellular Localization** Cell membrane ; Multi-pass membrane protein .

**Tissue specificity** Kidney.

**Function** Disease:Defects in AVPR2 are the cause of diabetes insipidus nephrogenic X-linked (XNDI) [MIM:304800]; also known as diabetes insipidus nephrogenic type 1. XNDI is caused by the inability of the renal collecting ducts to absorb water in response to arginine vasopressin. It is characterized by excessive water drinking (polydipsia), excessive urine excretion (polyuria), persistent hypotonic urine, and hypokalemia.,Disease:Defects in AVPR2 are the cause of nephrogenic syndrome of inappropriate antidiuresis (NSIAD) [MIM:300539]. This disorder is characterized by an inability to excrete a free water load, with inappropriately concentrated urine and resultant hyponatremia, hypoosmolality, and natriuresis.,Function:Receptor for arginine vasopressin. The activity of this receptor is mediated by G proteins which activate adenylate cyclase.,online information:AVPR2 pages,similarity:Belongs to the G-protein coupled receptor 1 family.,tissue specificity:Kidney.,

## Validation Data



Western Blot analysis of 1,mouse-lung 2,mouse-spleen 3,mouse-kidney 4,mouse-heart 5,293 cells using primary antibody diluted at 1:500(4°C overnight). Secondary antibody:Goat Anti-rabbit IgG IRDye 800( diluted at 1:5000, 25°C, 1 hour)

## Contact information

Orders: [order@immunoway.com](mailto:order@immunoway.com)  
Support: [tech@immunoway.com](mailto:tech@immunoway.com)  
Telephone: 877-594-3616 (Toll Free), 408-747-0185  
Website: <http://www.immunoway.com>  
Address: 2200 Ringwood Ave San Jose, CA 95131 USA



Please scan the QR code to access additional product information:  
**AVP Receptor V2**  
**Rabbit pAb**

