

# Granzyme M Rabbit pAb

CatalogNo: YT6049

## Key Features

### Host Species

- Rabbit

### Reactivity

- Human,Rat

### Applications

- IHC,IF,ELISA

### Isotype

- IgG

## Recommended Dilution Ratios

IHC 1:50-200

ELISA 1:10000-20000

IF 1:50-200

## Storage

**Storage\*** -15°C to -25°C/1 year(Do not lower than -25°C)

**Formulation** Liquid in PBS containing 50% glycerol, 0.5% BSA and 0.02% sodium azide.

## Basic Information

**Clonality** Polyclonal

## Immunogen Information

**Immunogen** Synthetic peptide from human protein at AA range: 207-256

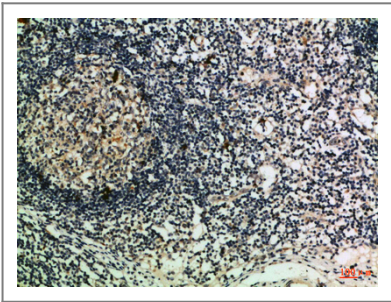
**Specificity** The antibody detects endogenous Granzyme M

## Target Information

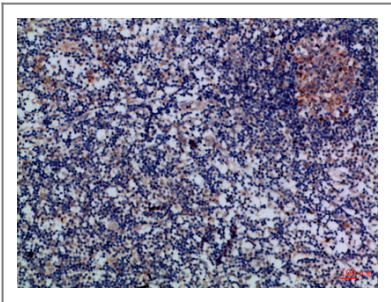
**Gene name** GZMM MET1

<b>Protein Name</b>	Granzyme M (Met-1 serine protease) (Hu-Met-1) (Met-ase) (Natural killer cell granular protease)		
	<b>Organism</b>	<b>Gene ID</b>	<b>UniProt ID</b>
	Human	<a href="#">3004;</a>	<a href="#">P51124;</a>
<b>Cellular Localization</b>	Secreted. Cytoplasmic granule. Granules of large granular lymphocytes.		
<b>Tissue specificity</b>	Highly and constitutively expressed in activated natural killer (NK) cells.		
<b>Function</b>	Function: Cleaves peptide substrates after methionine, leucine, and norleucine., similarity: Belongs to the peptidase S1 family. Granzyme subfamily., similarity: Contains 1 peptidase S1 domain., subcellular location: Granules of large granular lymphocytes.,		

| Validation Data



Immunohistochemical analysis of paraffin-embedded Human-lymph, antibody was diluted at 1:100



Immunohistochemical analysis of paraffin-embedded Human-lymph, antibody was diluted at 1:100

| Contact information

Orders: order@immunoway.com  
Support: tech@immunoway.com  
Telephone: 877-594-3616 (Toll Free), 408-747-0185  
Website: http://www.immunoway.com  
Address: 2200 Ringwood Ave San Jose, CA 95131 USA



Please scan the QR code to access additional product information:  
**Granzyme M Rabbit pAb**

