

Haptoglobin Rabbit pAb

CatalogNo: YT6013

Key Features

Host Species

- Rabbit

Reactivity

- Human,Rat,Mouse,

Applications

- IHC,IF,ELISA

Isotype

- IgG

Recommended Dilution Ratios

IHC 1:50-200

ELISA 1:10000-20000

IF 1:50-200

Storage

Storage* -15°C to -25°C/1 year(Do not lower than -25°C)

Formulation Liquid in PBS containing 50% glycerol, 0.5% BSA and 0.02% sodium azide.

Basic Information

Clonality Polyclonal

Immunogen Information

Immunogen Synthetic peptide from human protein at AA range: 300-360

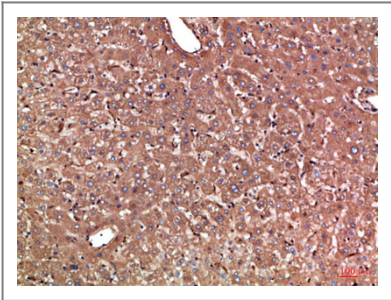
Specificity The antibody detects endogenous Haptoglobin

Target Information

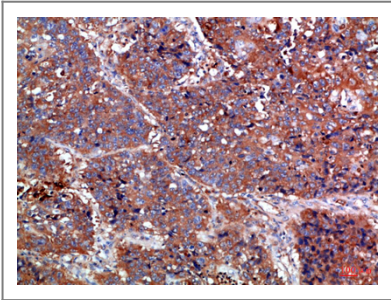
Gene name HP

Protein Name	Haptoglobin (Zonulin) [Cleaved into: Haptoglobin alpha chain; Haptoglobin beta chain]		
	Organism	Gene ID	UniProt ID
	Human	3240;	P00738;
	Mouse	15439;	Q61646;
Cellular Localization	Secreted.		
Tissue specificity	Expressed by the liver and secreted in plasma.		
Function	<p>Caution:Although homologous to serine proteases, it has lost all essential catalytic residues and has no enzymatic activity.,Function:Haptoglobin combines with free plasma hemoglobin, preventing loss of iron through the kidneys and protecting the kidneys from damage by hemoglobin, while making the hemoglobin accessible to degradative enzymes.,online information:Haptoglobin entry,online information:The Singapore human mutation and polymorphism database,polymorphism:In the human populations there are two major allelic forms, alpha-1 with 83 residues and alpha-2 with 142 residues. These alleles determine the 3 major phenotypes HP*1F/HP*1S and HP*2FS. The two main alleles of HP*1 are called HP*1F (fast) and HP*1S (slow).,similarity:Belongs to the peptidase S1 family.,similarity:Contains 1 peptidase S1 domain.,similarity:Contains 1 Sushi (CCP/SCR) domain.,similarity:Contains 2 Sushi (CCP/SCR) domains.,subunit:Tetramer of two alpha and two beta chains.,tissue specificity:Expressed by the liver and secreted in plasma.,tissue specificity:In adult liver the amount of HPR mRNA is at the lower limit of detection, therefore the extent of its expression is at most less than 1000-fold that of the HP1F gene. No HPR mRNA can be detected in fetal liver. Expressed in hepatoma G2 and leukemia molt-4 cell lines.,</p>		

| Validation Data



Immunohistochemical analysis of paraffin-embedded Human-liver, antibody was diluted at 1:100



Immunohistochemical analysis of paraffin-embedded Human-lung-cancer, antibody was diluted at 1:100

| Contact information

Orders: order@immunoway.com
Support: tech@immunoway.com
Telephone: 877-594-3616 (Toll Free), 408-747-0185
Website: <http://www.immunoway.com>
Address: 2200 Ringwood Ave San Jose, CA 95131 USA



Please scan the QR code
to access additional
product information:
**Haptoglobin Rabbit
pAb**

For Research Use Only. Not for Use in Diagnostic Procedures.

[Antibody](#) | [ELISA Kits](#) | [Protein](#) | [Reagents](#)