

GSTA1 Rabbit pAb

CatalogNo: YT5981

Orthogonal Validated Comparable Abs 

Key Features

Host Species

- Rabbit

Reactivity

- Human, Mouse, Rat

Applications

- WB, IP, IHC, IF, ELISA

MW

- 26kD (Calculated)

Isotype

- IgG

Storage

Storage* -15°C to -25°C/1 year (Do not lower than -25°C)

Formulation Liquid in PBS containing 50% glycerol, 0.5% BSA and 0.02% sodium azide.

Recommended Dilution Ratios

WB 1:500-2000

IHC 1:50-200

ELISA 1:10000-20000

IF 1:50-200

Basic Information

Clonality Polyclonal

Immunogen Information

Immunogen The antiserum was produced against synthesized peptide derived from the Internal region of human GSTA1. AA range: 91-140

Specificity The antibody detects endogenous GSTA1

Target Information

Gene name GSTA1

Protein Name Glutathione S-transferase A1 (GST HA subunit 1) (GST class-alpha member 1) (GST-epsilon) (GSTA1-1) (GTH1)

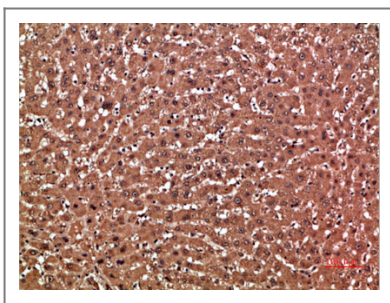
| Organism | Gene ID | UniProt ID |
|----------|------------------------|-------------------------|
| Human | 2938; | P08263; |
| Mouse | 14857; | P13745; |
| Rat | | P00502; |

Cellular Localization Cytoplasm.

Tissue specificity Liver.

Function Catalytic activity:RX + glutathione = HX + R-S-glutathione.,Domain:The C-terminal domain may form a component of the hydrophobic substrate-binding site, but in contrast appears not to be directly involved in GSH binding and is not absolutely essential for catalytic activity.,Function:Conjugation of reduced glutathione to a wide number of exogenous and endogenous hydrophobic electrophiles.,similarity:Belongs to the GST superfamily.,similarity:Belongs to the GST superfamily. Alpha family.,similarity:Contains 1 GST C-terminal domain.,similarity:Contains 1 GST N-terminal domain.,subunit:Homodimer or heterodimer of GSTA1 and GSTA2.,tissue specificity:Liver.,

Validation Data



Immunohistochemical analysis of paraffin-embedded human-liver, antibody was diluted at 1:200

Contact information

Orders: order@immunoway.com
Support: tech@immunoway.com
Telephone: 877-594-3616 (Toll Free), 408-747-0185
Website: <http://www.immunoway.com>
Address: 2200 Ringwood Ave San Jose, CA 95131 USA



Please scan the QR code to access additional product information:
GSTA1 Rabbit pAb

