

## CD300b Rabbit pAb

CatalogNo: YT5949

### Key Features

#### Host Species

- Rabbit

#### Reactivity

- Human, Mouse

#### Applications

- IHC, IF, ELISA

#### Isotype

- IgG

### Recommended Dilution Ratios

IHC 1:50-200

ELISA 1:10000-20000

IF 1:50-200

### Storage

**Storage\*** -15°C to -25°C/1 year (Do not lower than -25°C)

**Formulation** Liquid in PBS containing 50% glycerol, 0.5% BSA and 0.02% sodium azide.

### Basic Information

**Clonality** Polyclonal

### Immunogen Information

**Immunogen** Synthetic peptide from human protein at AA range: 61-110

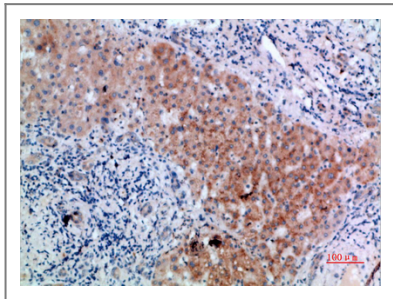
**Specificity** The antibody detects endogenous CD300b

### Target Information

**Gene name** CD300LB CD300B CLM7 CMRF35A2 IREM3 LMIR5 TREM5 UNQ2530/PRO6029

<b>Protein Name</b>	CMRF35-like molecule 7 (CLM-7) (CD300 antigen-like family member B) (CMRF35-A2) (Immune receptor expressed on myeloid cells 3) (IREM-3) (Leukocyte mono-Ig-like receptor 5) (Triggering receptor expressed on myeloid cells 5) (TREM-5) (CD antigen CD300b)		
	<b>Organism</b>	<b>Gene ID</b>	<b>UniProt ID</b>
	Human	<a href="#">124599</a> ;	<a href="#">A8K4G0</a> ;
	Mouse	<a href="#">217304</a> ;	<a href="#">Q3U497</a> ;
<b>Cellular Localization</b>	Cell membrane ; Single-pass type I membrane protein .		
<b>Tissue specificity</b>	Expressed exclusively in myeloid lineages.		
<b>Function</b>	Function:Acts as an activating immune receptor through its interaction with ITAM-bearing adapter TYROBP, and also independently by recruitment of GRB2.,PTM:Phosphorylation on Tyr-188 by FYN is required for interaction with GRB2.,similarity:Belongs to the CD300 family.,similarity:Contains 1 Ig-like V-type (immunoglobulin-like) domain.,subunit:Interacts with TYROBP, which enhances cell surface expression and activation properties. Interacts with GRB2 in the presence of FYN.,tissue specificity:Expressed exclusively in myeloid lineages.,		

## Validation Data



Immunohistochemical analysis of paraffin-embedded human liver cancer, antibody was diluted at 1:200

## Contact information

Orders: [order@immunoway.com](mailto:order@immunoway.com)  
 Support: [tech@immunoway.com](mailto:tech@immunoway.com)  
 Telephone: 877-594-3616 (Toll Free), 408-747-0185  
 Website: <http://www.immunoway.com>  
 Address: 2200 Ringwood Ave San Jose, CA 95131 USA



Please scan the QR code  
 to access additional  
 product information:  
**CD300b Rabbit pAb**