

DDR2 Rabbit pAb

CatalogNo: YT5938

Orthogonal Validated 

Key Features

Host Species

- Rabbit

Reactivity

- Human, Mouse

Applications

- IF, IHC, ELISA

Isotype

- IgG

Recommended Dilution Ratios

IHC 1:50-200**IF 1:500****ELISA 1:10000-20000**

Storage

Storage* -15°C to -25°C/1 year (Do not lower than -25°C)**Formulation** Liquid in PBS containing 50% glycerol, 0.5% BSA and 0.02% sodium azide.

Basic Information

Clonality Polyclonal

Immunogen Information

Immunogen Synthetic peptide from human protein at AA range: 31-80**Specificity** The antibody detects endogenous DDR2

Target Information

Gene name DDR2 NTRKR3 TKT TYRO10

Protein Name Discoidin domain-containing receptor 2 (Discoidin domain receptor 2) (CD167 antigen-like family member B) (Discoidin domain-containing receptor tyrosine kinase 2) (Neurotrophic tyrosine kinase, receptor-related 3) (Receptor protein-tyrosine kinase TKT) (Tyrosine-protein kinase TYRO10) (CD antigen CD167b)

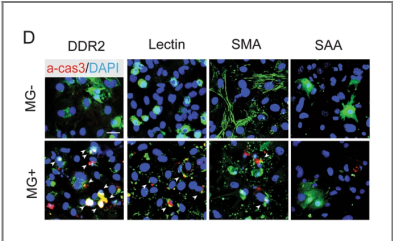
| Organism | Gene ID | UniProt ID |
|----------|-------------------------|--------------------------|
| Human | 4921 ; | Q16832 ; |
| Mouse | 18214 ; | Q62371 ; |

Cellular Localization Cell membrane ; Single-pass type I membrane protein .

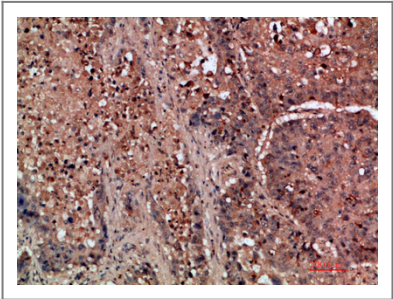
Tissue specificity Detected in osteocytes, osteoblastic cells in subchondral bone, bone lining cells, tibia and cartilage (at protein level). Detected at high levels in heart and lung, and at low levels in brain, placenta, liver, skeletal muscle, pancreas, and kidney.

Function Catalytic activity:ATP + a [protein]-L-tyrosine = ADP + a [protein]-L-tyrosine phosphate.,Function:This tyrosine kinase receptor for fibrillar collagen mediates fibroblast migration and proliferation. Contributes to cutaneous wound healing.,similarity:Belongs to the protein kinase superfamily. Tyr protein kinase family. Insulin receptor subfamily.,similarity:Contains 1 F5/8 type C domain.,similarity:Contains 1 protein kinase domain.,tissue specificity:The major 10 kDa transcript is expressed in high levels in heart and lung, less in brain, placenta, liver, skeletal muscle, pancreas, and kidney.,

Validation Data



Long, S., Gu, Y., An, Y. et al. Reovirus enhances cytotoxicity of natural killer cells against colorectal cancer via TLR3 pathway. J Transl Med 19, 185 (2021).



Immunohistochemical analysis of paraffin-embedded human-lung-cancer, antibody was diluted at 1:200

Contact information

Orders: order@immunoway.com
Support: tech@immunoway.com
Telephone: 877-594-3616 (Toll Free), 408-747-0185
Website: http://www.immunoway.com
Address: 2200 Ringwood Ave San Jose, CA 95131 USA



Please scan the QR code
to access additional
product information:
DDR2 Rabbit pAb

For Research Use Only. Not for Use in Diagnostic Procedures.

[Antibody](#) | [ELISA Kits](#) | [Protein](#) | [Reagents](#)