

## CD151 Rabbit pAb

CatalogNo: YT5932

### Key Features

#### Host Species

- Rabbit

#### Reactivity

- Human, Mouse, Rat

#### Applications

- IHC, IF, ELISA

#### Isotype

- IgG

### Recommended Dilution Ratios

IHC 1:50-200

ELISA 1:10000-20000

IF 1:50-200

### Storage

**Storage\*** -15°C to -25°C/1 year (Do not lower than -25°C)

**Formulation** Liquid in PBS containing 50% glycerol, 0.5% BSA and 0.02% sodium azide.

### Basic Information

**Clonality** Polyclonal

### Immunogen Information

**Immunogen** Synthetic peptide from human protein at AA range: 91-140

**Specificity** The antibody detects endogenous CD151

### Target Information

**Gene name** CD151 TSPAN24

**Protein Name** CD151 antigen (GP27) (Membrane glycoprotein SFA-1) (Platelet-endothelial tetraspan antigen 3) (PETA-3) (Tetraspanin-24) (Tspan-24) (CD antigen CD151)

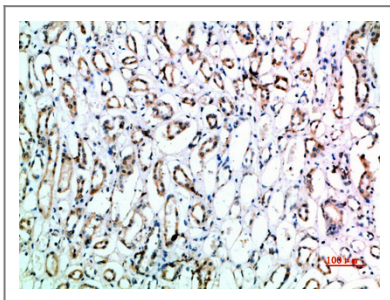
Organism	Gene ID	UniProt ID
Human	<a href="#">977</a> ;	<a href="#">P48509</a> ;
Mouse	<a href="#">12476</a> ;	<a href="#">O35566</a> ;
Rat		<a href="#">Q9QZA6</a> ;

**Cellular Localization** Membrane; Multi-pass membrane protein.

**Tissue specificity** Expressed in a variety of tissues including vascular endothelium and epidermis. Expressed on erythroid cells, with a higher level of expression in erythroid precursors than on mature erythrocytes.

**Function** Disease:Defects in CD151 are the cause of nephropathy with pretibial epidermolysis bullosa and deafness (NPEBD) [MIM:609057]. NPEBD is characterized by the association of hereditary nephritis, epidermolysis bullosa, deafness, and beta-thalassemia minor.,Function:Essential for the proper assembly of the glomerular and tubular basement membranes in kidney.,induction:By HTLV-1.,online information:Blood group antigen gene mutation database,polymorphism:CD151 defines the MER2=RAPH1 antigen of the RAPH blood group system. 92% of Caucasians are MER2-positive and 8% are apparently MER2-negative.,similarity:Belongs to the tetraspanin (TM4SF) family.,subunit:Interacts with integrins alpha3beta1, alpha5beta1, alpha3beta1 and alpha6beta4, with CD9 and CD181.,tissue specificity:Expressed in a variety of tissues including vascular endothelium and epidermis. Expressed on erythroid cells, with a higher level of expression in erythroid precursors than on mature erythrocytes.,

## Validation Data



Immunohistochemical analysis of paraffin-embedded human-kidney, antibody was diluted at 1:200

## Contact information

Orders: [order@immunoway.com](mailto:order@immunoway.com)  
Support: [tech@immunoway.com](mailto:tech@immunoway.com)  
Telephone: 877-594-3616 (Toll Free), 408-747-0185  
Website: <http://www.immunoway.com>  
Address: 2200 Ringwood Ave San Jose, CA 95131 USA



Please scan the QR code to access additional product information:  
**CD151 Rabbit pAb**

