

CD11c Rabbit pAb

CatalogNo: YT5924

| Key Features

Host Species

- Rabbit

Reactivity

- Human, Mouse

Applications

- IHC, IF, ELISA

Isotype

- IgG

| Recommended Dilution Ratios

IHC 1:50-200

ELISA 1:10000-20000

IF 1:50-200

| Storage

Storage* -15°C to -25°C/1 year(Do not lower than -25°C)

Formulation Liquid in PBS containing 50% glycerol, 0.5% BSA and 0.02% sodium azide.

| Basic Information

Clonality Polyclonal

| Immunogen Information

Immunogen Synthetic peptide from human protein at AA range: 920-980

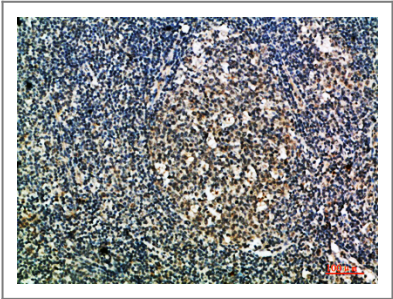
Specificity The antibody detects endogenous Integrin α X

| Target Information

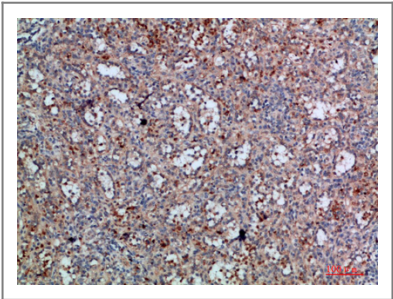
Gene name ITGAX CD11C

| | | | |
|------------------------------|---|------------------------|-------------------------|
| Protein Name | Integrin alpha-X (CD11 antigen-like family member C) (Leu M5) (Leukocyte adhesion glycoprotein p150,95 alpha chain) (Leukocyte adhesion receptor p150,95) (CD antigen CD11c) | | |
| | Organism | Gene ID | UniProt ID |
| | Human | 3687; | P20702; |
| | Mouse | 16411; | Q9QXH4; |
| Cellular Localization | Membrane; Single-pass type I membrane protein. | | |
| Tissue specificity | Predominantly expressed in monocytes and granulocytes. | | |
| Function | Domain:The integrin I-domain (insert) is a VWFA domain. Integrins with I-domains do not undergo protease cleavage.,Function:Integrin alpha-X/beta-2 is a receptor for fibrinogen. It recognizes the sequence G-P-R in fibrinogen. It mediates cell-cell interaction during inflammatory responses. It is especially important in monocyte adhesion and chemotaxis.,similarity:Belongs to the integrin alpha chain family.,similarity:Contains 1 VWFA domain.,similarity:Contains 7 FG-GAP repeats.,subunit:Heterodimer of an alpha and a beta subunit. Alpha-X associates with beta-2.,tissue specificity:Predominantly expressed in monocytes and granulocytes., | | |

| Validation Data



Immunohistochemical analysis of paraffin-embedded human-tonsil, antibody was diluted at 1:200



Immunohistochemical analysis of paraffin-embedded human-spleen, antibody was diluted at 1:200

| Contact information

Orders: order@immunoway.com
Support: tech@immunoway.com
Telephone: 877-594-3616 (Toll Free), 408-747-0185
Website: http://www.immunoway.com
Address: 2200 Ringwood Ave San Jose, CA 95131 USA



Please scan the QR code
to access additional
product information:
CD11c Rabbit pAb

For Research Use Only. Not for Use in Diagnostic Procedures.

[Antibody](#) | [ELISA Kits](#) | [Protein](#) | [Reagents](#)