

Pan glycine myristoylation Rabbit pAb

CatalogNo: YT5835

Key Features

Host Species

- Rabbit

Reactivity

- Species independent

Applications

- WB, ELISA

MW

- 130kD, 80kD, 35kD (Observed)

Isotype

- IgG

Recommended Dilution Ratios

WB 1:500-2000

ELISA 1:10000-20000

Storage

Storage* -15°C to -25°C/1 year (Do not lower than -25°C)

Formulation Liquid in PBS containing 50% glycerol, 0.5% BSA and 0.02% sodium azide.

Basic Information

Clonality Polyclonal

Immunogen Information

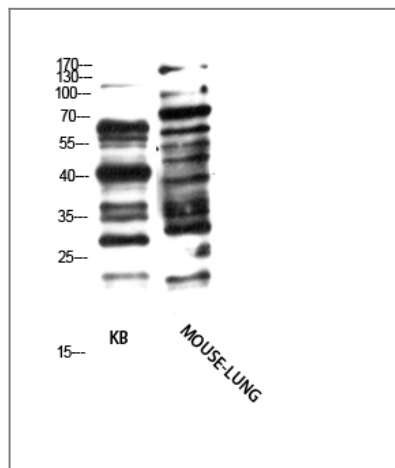
Immunogen Synthetic myristoylated peptide

Specificity The antibody detects endogenous glycine myristoylated protein

Target Information

Protein Name

Validation Data



Western Blot analysis of KB, MOUSE-LUNG cells using Antibody diluted at 1000. Secondary antibody(catalog#:RS0002) was diluted at 1:20000

Contact information

Orders: order@immunoway.com
Support: tech@immunoway.com
Telephone: 877-594-3616 (Toll Free), 408-747-0185
Website: <http://www.immunoway.com>
Address: 2200 Ringwood Ave San Jose, CA 95131 USA



Please scan the QR code to access additional product information:
Pan glycine myristoylation Rabbit pAb

For Research Use Only. Not for Use in Diagnostic Procedures.

[Antibody](#) | [ELISA Kits](#) | [Protein](#) | [Reagents](#)