

## COL17A1 Rabbit pAb

CatalogNo: YT5832

### Key Features

#### Host Species

- Rabbit

#### Reactivity

- Human, Mouse

#### Applications

- WB, IHC, IF, ELISA

#### MW

- 150kD (Observed)

#### Isotype

- IgG

### Storage

**Storage\*** -15°C to -25°C/1 year (Do not lower than -25°C)

**Formulation** Liquid in PBS containing 50% glycerol, 0.5% BSA and 0.02% sodium azide.

### Recommended Dilution Ratios

**IHC 1:200-1:1000**

**WB 1:500-2000**

**IF 1:100-300**

**ELISA 1:5000-20000**

**Not yet tested in other applications.**

### Basic Information

**Clonality** Polyclonal

### Immunogen Information

**Immunogen** The antiserum was produced against synthesized peptide derived from the Internal region of human COL17A1. AA range: 481-530

**Specificity** The antibody detects endogenous COL17A1 protein

---

## | Target Information

**Gene name** COL17A1 BP180 BPAG2

**Protein Name** collagen, type XVII, alpha 1

Organism	Gene ID	UniProt ID
Human	<a href="#">1308</a> ;	<a href="#">Q9UMD9</a> ;
Mouse	<a href="#">12821</a> ;	<a href="#">Q07563</a> ;

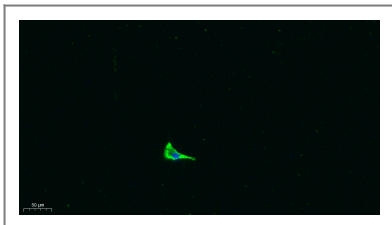
**Cellular Localization** Cell junction, hemidesmosome. Membrane; Single-pass type II membrane protein. Localized along the plasma membrane of the hemidesmosome.; [120 kDa linear IgA disease antigen]: Secreted, extracellular space, extracellular matrix, basement membrane. Exclusively localized to anchoring filaments. Localized to the epidermal side of split skin.; [97 kDa linear IgA disease antigen]: Secreted, extracellular space, extracellular matrix, basement membrane. Localized in the lamina lucida beneath the hemidesmosomes.

**Tissue specificity** Detected in skin (PubMed:8618013). In the cornea, it is detected in the epithelial basement membrane, the epithelial cells, and at a lower level in stromal cells (at protein level) (PubMed:25676728). Stratified squamous epithelia. Found in hemidesmosomes. Expressed in cornea, oral mucosa, esophagus, intestine, kidney collecting ducts, ureter, bladder, urethra and thymus but is absent in lung, blood vessels, skeletal muscle and nerves.

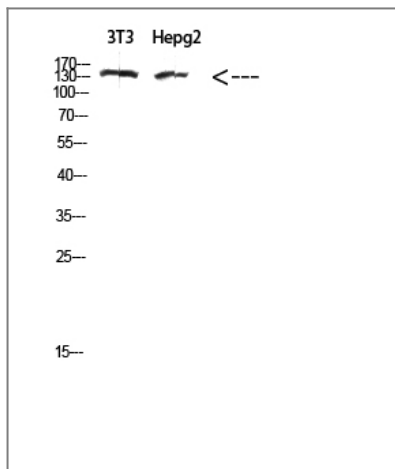
**Function** Disease:Defects in COL17A1 are a cause of generalized atrophic benign epidermolysis bullosa (GABEB) [MIM:226650]. GABEB is a non-lethal, adult form of junctional epidermolysis bullosa characterized by life-long blistering of the skin, associated with hair and tooth abnormalities.,Function:May play a role in the integrity of hemidesmosome and the attachment of basal keratinocytes to the underlying basement membrane.,Function:The 120 kDa linear IgA disease antigen is an anchoring filament component involved in dermal-epidermal cohesion. Is the target of linear IgA bullous dermatitis autoantibodies.,miscellaneous:Both the 120 kDa linear IgA disease antigen and the 97 kDa linear IgA disease antigen of COL17A1, represent major antigenic targets of autoantibodies in patients with linear IgA disease (LAD). LAD is a subepidermal blistering disorder characterized by tissue-bound and circulating IgA autoantibodies to the dermal-epidermal junction. These IgA autoantibodies preferentially react with 97 and the 120 kDa forms, but not with the full-length COL17A1, suggesting that the cleavage of the ectodomain generates novel autoantigenic epitopes.,PTM:Prolines at the third position of the tripeptide repeating unit (G-X-Y) are hydroxylated in some or all of the chains.,PTM:The ectodomain is shedded from the surface of keratinocytes resulting in a 120-kDa soluble form, also named as 120 kDa linear IgA disease antigen. The shedding is mediated by membrane-bound metalloproteases. This cleavage is inhibited by phosphorylation at Ser-544.,PTM:The intracellular/endo domain is disulfide-linked.,sequence Caution:Contaminating sequence. Potential poly-A sequence.,subcellular location:Exclusively localized to anchoring filaments. Localized to the epidermal side of split skin.,subcellular location:Localized along the plasma membrane of the hemidesmosome.,subcellular location:Localized in the lamina lucida beneath the hemidesmosomes.,subunit:Homotrimers of alpha 1(XVII)chains.,tissue specificity:Stratified squamous epithelia. Found in hemidesmosomes. Expressed in cornea, oral mucosa, esophagus, intestine, kidney collecting ducts, ureter, bladder, urethra and thymus but is absent in lung, blood vessels, skeletal muscle and nerves.,

---

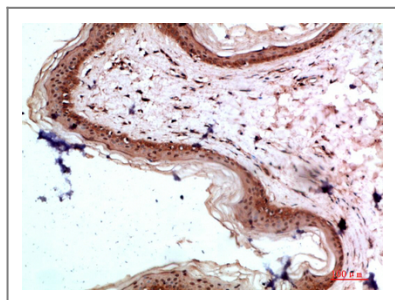
## | Validation Data



Immunofluorescence analysis of A549. 1,primary Antibody was diluted at 1:200(4°C overnight). 2, Goat Anti Rabbit IgG (H&L) - Alexa Fluor 488 Secondary antibody was diluted at 1:1000(room temperature, 50min).3, DAPI(blue) 10min.



Western Blot analysis of 3T3, hepg2 cells using Antibody diluted at 500. Secondary antibody(catalog#:RS0002) was diluted at 1:20000



Immunohistochemical analysis of paraffin-embedded human-skin, antibody was diluted at 1:200

## Contact information

Orders: [order@immunoway.com](mailto:order@immunoway.com)  
Support: [tech@immunoway.com](mailto:tech@immunoway.com)  
Telephone: 877-594-3616 (Toll Free), 408-747-0185  
Website: <http://www.immunoway.com>  
Address: 2200 Ringwood Ave San Jose, CA 95131 USA



Please scan the QR code to access additional product information:  
**COL17A1 Rabbit pAb**

For Research Use Only. Not for Use in Diagnostic Procedures.

[Antibody](#) | [ELISA Kits](#) | [Protein](#) | [Reagents](#)