

MBL-C Rabbit pAb

CatalogNo: YT5820

Key Features

Host Species

- Rabbit

Reactivity

- Human, Mouse

Applications

- WB, IHC

MW

- 27kD (Observed)

Isotype

- IgG

Recommended Dilution Ratios

WB 1:500-2000

IHC 1:50-300

Storage

Storage* -15°C to -25°C/1 year (Do not lower than -25°C)

Formulation Liquid in PBS containing 50% glycerol, 0.5% BSA and 0.02% sodium azide.

Basic Information

Clonality Polyclonal

Immunogen Information

Immunogen Synthetic peptide from human protein at AA range: 21-70

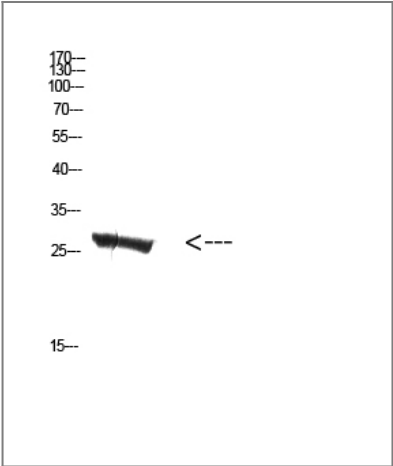
Specificity The antibody detects endogenous MBL-C protein

Target Information

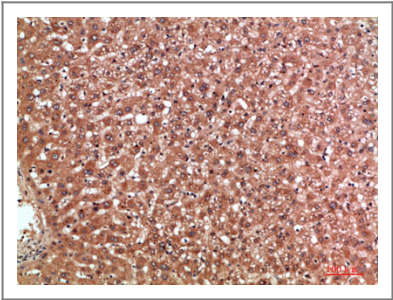
Gene name MBL2 COLEC1 MBL

Protein Name	mannose-binding lectin (protein C) 2, soluble (opsonic defect)		
	Organism	Gene ID	UniProt ID
	Human	4153 ;	P11226 ;
	Mouse	17195 ;	P41317 ;
Cellular Localization	Secreted .		
Tissue specificity	Plasma protein produced mainly in the liver.		
Function	Disease:Genetic variations in MBL2 are associated with susceptibility to hepatitis B virus infection (HBV infection) [MIM:610424]. Approximately one third of all cases of cirrhosis and half of all cases of hepatocellular carcinoma can be attributed to chronic HBV infection. HBV infection may result in subclinical or asymptomatic infection, acute self-limited hepatitis, or fulminant hepatitis requiring liver transplantation.,Disease:There is an association between low levels of MBL2 and a defect of opsonization which results in susceptibility to frequent and chronic infections.,Function:Binds mannose and N-acetylglucosamine in a calcium-dependent manner. Is capable of host defense against pathogens, by activating the classical complement pathway independently of the antibody.,online information:Mannose-binding protein,similarity:Contains 1 C-type lectin domain.,similarity:Contains 1 collagen-like domain.,subunit:Oligomeric complex of 6 set of homotrimers. Interacts with MASP1 and MASP2; the interaction is calcium-dependent.,		

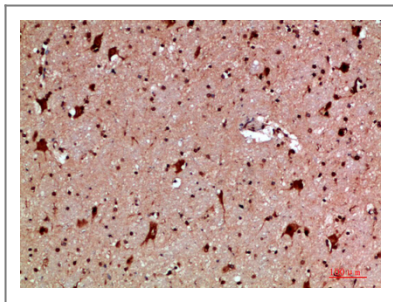
Validation Data



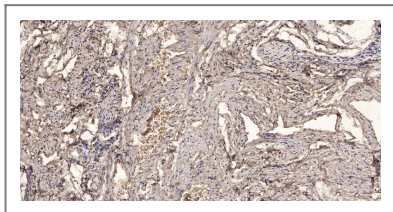
Western Blot analysis of mouse-kidney cells using Antibody diluted at 500. Secondary antibody(catalog#:RS0002) was diluted at 1:20000



Immunohistochemical analysis of paraffin-embedded human-liver, antibody was diluted at 1:200



Immunohistochemical analysis of paraffin-embedded human-brain, antibody was diluted at 1:200



Immunohistochemical analysis of paraffin-embedded human oophoroma. 1, Antibody was diluted at 1:200(4° overnight). 2, Tris-EDTA,pH9.0 was used for antigen retrieval. 3,Secondary antibody was diluted at 1:200(room temperature, 45min).

| Contact information

Orders: order@immunoway.com
Support: tech@immunoway.com
Telephone: 877-594-3616 (Toll Free), 408-747-0185
Website: <http://www.immunoway.com>
Address: 2200 Ringwood Ave San Jose, CA 95131 USA



Please scan the QR code to access additional product information:
MBL-C Rabbit pAb

For Research Use Only. Not for Use in Diagnostic Procedures.

[Antibody](#) | [ELISA Kits](#) | [Protein](#) | [Reagents](#)