

CREB3 Rabbit pAb

CatalogNo: YT5803

Key Features

Host Species

- Rabbit

Reactivity

- Human, Mouse, Rat

Applications

- WB, ELISA

MW

- 50kD (Observed)

Isotype

- IgG

Recommended Dilution Ratios

WB 1:500-2000

ELISA 1:10000-20000

Storage

Storage* -15°C to -25°C/1 year (Do not lower than -25°C)

Formulation Liquid in PBS containing 50% glycerol, 0.5% BSA and 0.02% sodium azide.

Basic Information

Clonality Polyclonal

Immunogen Information

Immunogen The antiserum was produced against synthesized peptide derived from the Internal region of human CREB3. AA range:151-200

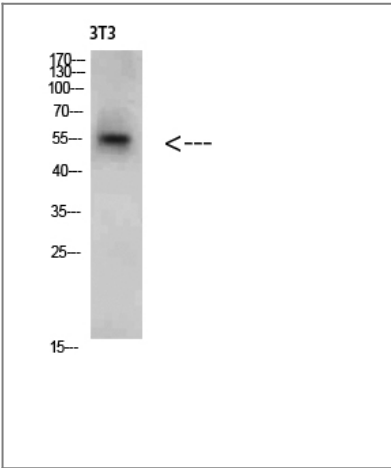
Specificity CREB3 Polyclonal Antibody detects endogenous levels of CREB3

Target Information

Gene name CREB3

Protein Name	CREB3		
	Organism	Gene ID	UniProt ID
	Human	10488;	O43889;
	Mouse		Q61817;
Cellular Localization	<p>[Isoform 1]: Endoplasmic reticulum membrane ; Single-pass type II membrane protein . Golgi apparatus . Colocalizes with HCFC1 in neuronal cell bodies of the trigeminal ganglia (PubMed:10623756). Colocalizes with DCSTAMP in the ER membrane of immature dendritic cell (DC) (PubMed:20546900). Colocalizes with CANX, CCR1, HCFC1 in the ER membrane (PubMed:10623756). . ; [Isoform 2]: Nucleus . Cytoplasm . Predominantly in the nucleus (PubMed:19779205). Not associated with membranes (PubMed:19779205). . ; [Processed cyclic AMP-responsive element-binding protein 3]: Nucleus. Upon RIP activation the transcriptional active processed cyclic AMP-responsive element-binding protein 3 form translocates into the nucleus. Detected in the nucleus upon dendritic cell maturation and RIP activation. Colocalizes with CREBRF in nuclear foci. Colocalizes with CREBZF in promyelocytic leukemia protein nuclear bodies (PML-NB). . ; [Isoform 1]: Cytoplasm. (Microbial infection) Sequestered into the cytoplasm by the HCV core protein. .</p>		
Tissue specificity	Ubiquitously expressed (PubMed:9271389, PubMed:19779205). Expressed in dendritic cells (DC). Weakly expressed in monocytes (at protein level) (PubMed:20546900).		
Function	<p>Function:Transcription factors activated upon intramembrane proteolysis (RIP), binds the cAMP response element (CRE) (consensus: 5'-GTGACGT[AG][AG]-3'), a sequence present in many viral and cellular promoters. Binds to and requires HCFC1 as a coactivator. Activity and expression are suppressed when the HCFC1-CREB3 complex binds with CREBZF. Participates in LKN-1/CCL15-induced chemotaxis signaling.,PTM:During activation, an approximative 40 kDa fragment containing the cytoplasmic transcription factor domain is released by proteolysis. The cleavage is probably performed sequentially by site-1 and site-2 proteases.,PTM:N-glycosylated.,similarity:Belongs to the bZIP family. ATF subfamily.,similarity:Contains 1 bZIP domain.,subcellular location:Under activation the cleaved N-terminal cytoplasmic domain translocates into the nucleus.,subunit:Interacts with CCR1. Interacts with HCFC1; required to activate it. Binds with CREBZF only when in combination with HCFC1. Interacts with HCV core protein.,tissue specificity:Ubiquitous.,</p>		

Validation Data



Western Blot analysis of 3T3 cells using CREB3 Polyclonal Antibody diluted at 1:2000. Secondary antibody(catalog#:RS0002) was diluted at 1:20000

| Contact information

Orders: order@immunoway.com
Support: tech@immunoway.com
Telephone: 877-594-3616 (Toll Free), 408-747-0185
Website: <http://www.immunoway.com>
Address: 2200 Ringwood Ave San Jose, CA 95131 USA



Please scan the QR code
to access additional
product information:
CREB3 Rabbit pAb

For Research Use Only. Not for Use in Diagnostic Procedures.

[Antibody](#) | [ELISA Kits](#) | [Protein](#) | [Reagents](#)