

# Nanos Homologue 1 (NANOS1) Rabbit pAb

CatalogNo: YT5788

## Key Features

### Host Species

- Rabbit

### Reactivity

- Human, Mouse

### Applications

- WB, ELISA, IHC

### MW

- 30kD (Observed)

### Isotype

- IgG

## Recommended Dilution Ratios

**WB 1:500-2000**

**IHC 1:50-300**

**ELISA 1:2000-20000**

## Storage

**Storage\*** -15°C to -25°C/1 year (Do not lower than -25°C)

**Formulation** Liquid in PBS containing 50% glycerol, 0.5% BSA and 0.02% sodium azide.

## Basic Information

**Clonality** Polyclonal

## Immunogen Information

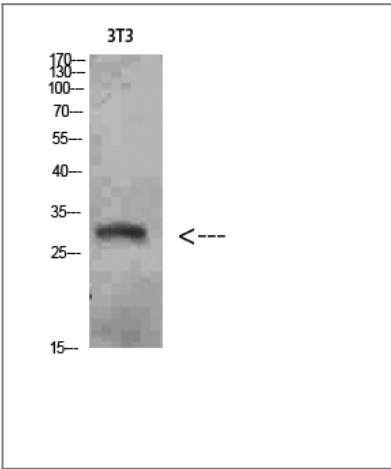
**Immunogen** Synthesized peptide derived from Nanos Homologue 1 (NANOS1) at AA range: 151-200

**Specificity** Nanos Homologue 1 (NANOS1) Polyclonal Antibody detects endogenous levels of Nanos Homologue 1 (NANOS1)

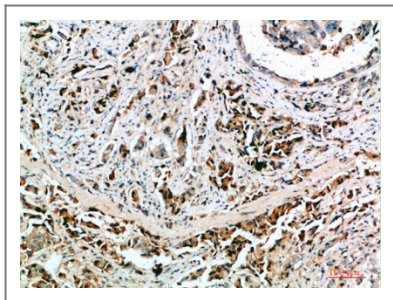
## Target Information

Gene name	NANOS1		
Protein Name	Nanos Homologue 1 (NANOS1)		
	Organism	Gene ID	UniProt ID
	Human	<a href="#">340719</a> ;	<a href="#">Q8WY41</a> ;
	Mouse	<a href="#">332397</a> ;	<a href="#">Q80WY3</a> ;
Cellular Localization	Cytoplasm, perinuclear region . Cytoplasm . Colocalizes with SNAPIN and PUM2 in the perinuclear region of germ cells. .		
Tissue specificity	Testis and ovary (at protein level). Predominantly expressed in testis. Specifically expressed during germline development. In adult tissues, it is mainly expressed in spermatogonia, the stem cells of the germline. Also expressed during meiosis in spermatocytes. Not present in late, post-meiotic stage germ cells. Expressed in fetal ovaries, while it is weakly or not expressed in mature postmeiotic oocytes, suggesting that it may be expressed in premeiotic female germ cells. Expressed at high levels only in the E-cadherin deficient cell lines. Highly expressed in lung carcinomas and mostly detected in invasive tumor cells and its expression correlates with tumor aggressiveness.		
Function	Domain:The Nanos-type zinc finger is composed of two C2HC motifs, each motif binding one molecule of zinc. It is essential for the translation repression activity of the protein.,Function:May regulate translation of specific mRNAs by forming a complex with PUM2 that associates with the 3'-UTR of mRNA targets.,similarity:Belongs to the nanos family.,similarity:Contains 1 nanos-type zinc finger.,subunit:Interacts with PUM2.,tissue specificity:Predominantly expressed in testis. Specifically expressed during germline development. In adult tissues, it is mainly expressed in spermatogonia, the stem cells of the germline. Also expressed during meiosis in spermatocytes. Not present in late, post-meiotic stage germ cells. Expressed in fetal ovaries, while it is weakly or not expressed in mature postmeiotic oocytes, suggesting that it may be expressed in premeiotic female germ cells.,		

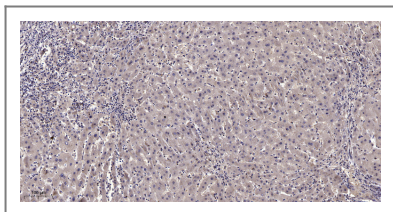
| Validation Data



Western Blot analysis of 3T3 cells using Nanos Homologue 1 (NANOS1) Polyclonal Antibody diluted at 1:1500. Secondary antibody(catalog#:RS0002) was diluted at 1:20000



Immunohistochemical analysis of paraffin-embedded human-breast-cancer, antibody was diluted at 1:200



Immunohistochemical analysis of paraffin-embedded human liver cancer. 1, Antibody was diluted at 1:200(4° overnight). 2, Tris-EDTA,pH9.0 was used for antigen retrieval. 3,Secondary antibody was diluted at 1:200(room temperature, 45min).

## | Contact information

Orders: [order@immunoway.com](mailto:order@immunoway.com)  
Support: [tech@immunoway.com](mailto:tech@immunoway.com)  
Telephone: 877-594-3616 (Toll Free), 408-747-0185  
Website: <http://www.immunoway.com>  
Address: 2200 Ringwood Ave San Jose, CA 95131 USA



Please scan the QR code to access additional product information:  
**Nanos Homologue 1 (NANOS1) Rabbit pAb**

For Research Use Only. Not for Use in Diagnostic Procedures.

[Antibody](#) | [ELISA Kits](#) | [Protein](#) | [Reagents](#)