

## TRIF Rabbit pAb

CatalogNo: YT5783

Orthogonal Validated 

### Key Features

#### Host Species

- Rabbit

#### Reactivity

- Human, Mouse

#### Applications

- WB, IHC, IF, ELISA

#### MW

- 80kD (Observed)

#### Isotype

- IgG

### Recommended Dilution Ratios

**WB 1:500-2000****IHC 1:50-200****ELISA 1:10000-20000****IF 1:50-200**

### Storage

**Storage\*** -15°C to -25°C/1 year (Do not lower than -25°C)**Formulation** Liquid in PBS containing 50% glycerol, 0.5% BSA and 0.02% sodium azide.

### Basic Information

**Clonality** Polyclonal

### Immunogen Information

**Immunogen** Synthesized peptide derived from TRIF at AA range: 663-712**Specificity** TRIF Polyclonal Antibody detects endogenous levels of TRIF

### Target Information

Gene name           TICAM1

Protein Name        TRIF

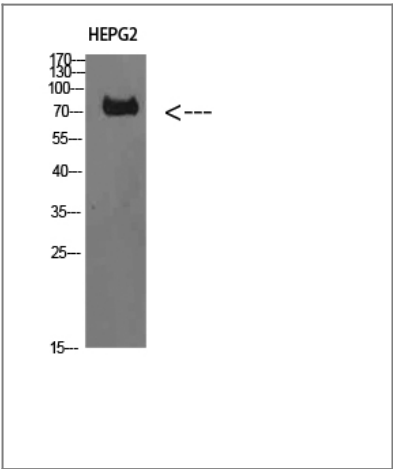
Organism	Gene ID	UniProt ID
Human	<a href="#">148022</a> ;	<a href="#">Q8IUC6</a> ;
Mouse	<a href="#">106759</a> ;	<a href="#">Q80UF7</a> ;

**Cellular Localization**           Cytoplasmic vesicle, autophagosome . Cytoplasm, cytosol . Mitochondrion . Colocalizes with UBQLN1 in the autophagosome (PubMed:21695056). Colocalizes in the cytosol with DDX1, DDX21 and DHX36. Colocalizes in the mitochondria with DDX1 and poly(I:C) RNA ligand. The multi-helicase-TICAM1 complex may translocate to the mitochondria upon poly(I:C) RNA ligand stimulation (By similarity). .

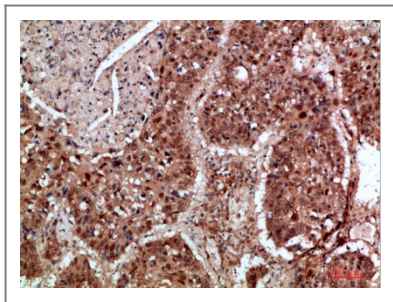
**Tissue specificity**   Ubiquitously expressed but with higher levels in liver.

**Function**            Domain:The N-terminal region is essential for activation of the IFNB promoter activity.,Function:Involved in innate immunity against invading pathogens. Adapter used by TLR3 and TLR4 (through TICAM2) to mediate NF-kappa-B and interferon-regulatory factor (IRF) activation, and to induce apoptosis. Ligand binding to these receptors results in TRIF recruitment through its TIR domain. Distinct protein-interaction motifs allow recruitment of the effector proteins TBK1, TRAF6 and RIPK1, which in turn, lead to the activation of transcription factors IRF3 and IRF7, NF-kappa-B and FADD respectively.,PTM:Phosphorylated by TBK1.,similarity:Contains 1 TIR domain.,subunit:Homodimer (Probable). Interacts with the TIR domain of TLR3. Interacts with AZI2, TBK1, IRF3 and IRF7. Interacts with TRAF6. Interacts with TICAM2 in TLR4 recruitment. Interaction with PIAS4 inhibits the TICAM1-induced NF-kappa-B, IRF and IFNB1 activation. Interacts with IKBKB and IKBKE. Interaction with SARM1 blocks TICAM1-dependent transcription factor activation. Interacts with TRAF3.,tissue specificity:Ubiquitously expressed but with higher levels in liver.,

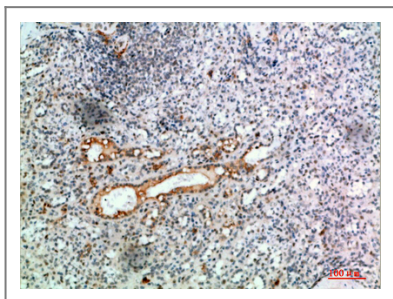
| Validation Data



Western Blot analysis of HEPG2 cells using TRIF Polyclonal Antibody diluted at 1:1000. Secondary antibody(catalog#:RS0002) was diluted at 1:20000



Immunohistochemical analysis of paraffin-embedded human-lung-cancer, antibody was diluted at 1:200



Immunohistochemical analysis of paraffin-embedded human-spleen, antibody was diluted at 1:200

## Contact information

Orders: [order@immunoway.com](mailto:order@immunoway.com)  
Support: [tech@immunoway.com](mailto:tech@immunoway.com)  
Telephone: 877-594-3616 (Toll Free), 408-747-0185  
Website: <http://www.immunoway.com>  
Address: 2200 Ringwood Ave San Jose, CA 95131 USA



Please scan the QR code  
to access additional  
product information:  
**TRIF Rabbit pAb**

For Research Use Only. Not for Use in Diagnostic Procedures.

[Antibody](#) | [ELISA Kits](#) | [Protein](#) | [Reagents](#)