

MIA2 Rabbit pAb

CatalogNo: YT5779

| Key Features

Host Species

- Rabbit

Reactivity

- Human, Mouse

Applications

- WB, IHC

MW

- 65kD (Observed)

Isotype

- IgG

| Recommended Dilution Ratios

WB 1:500-2000

IHC 1:50-300

| Storage

Storage* -15°C to -25°C/1 year (Do not lower than -25°C)

Formulation Liquid in PBS containing 50% glycerol, 0.5% BSA and 0.02% sodium azide.

| Basic Information

Clonality Polyclonal

| Immunogen Information

Immunogen Synthesized peptide derived from MIA2 at AA range: 361-410

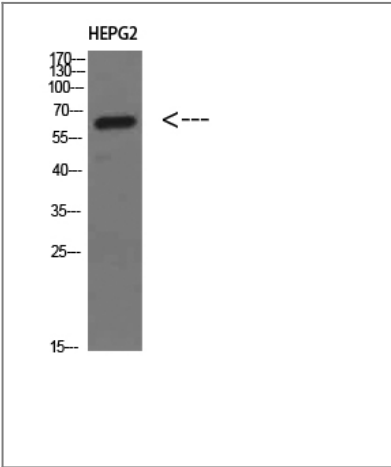
Specificity MIA2 Polyclonal Antibody detects endogenous levels of MIA2

| Target Information

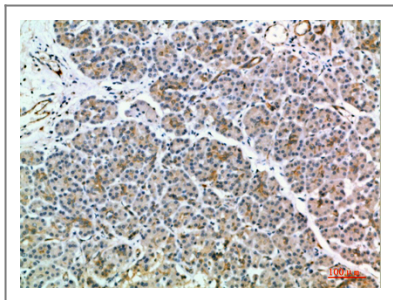
Gene name MIA2

Protein Name	MIA2		
	Organism	Gene ID	UniProt ID
	Human	117153 ;	Q96PC5 ;
	Mouse	338320 ;	Q91ZV0 ;
Cellular Localization	Endoplasmic reticulum membrane ; Single-pass membrane protein . Localizes to endoplasmic reticulum exit sites (ERES), also known as transitional endoplasmic reticulum (tER). .		
Tissue specificity	Highly expressed in liver and weakly in testis. Expression was higher in patients with severe fibrosis or inflammation and chronic hepatitis (PubMed:12586826). Isoform 1 is specifically expressed in lung, testis, small intestine, colon, pancreas, kidney, liver and prostate (PubMed:27138255). Isoform 8 is expressed only in testis (at the protein level). Isoform 8 (at protein level) and isoform 9 are expressed in cutaneous T-cell lymphoma (CTCL) cell lines, colorectal carcinomas, breast carcinomas and melanoma. Isoform 9, but not isoform 5A, is expressed in head and neck squamous cell carcinoma (PubMed:12839582).		
Function	Disease:Autoantigen found several cancer types, including benign meningioma and cutaneous T-cell lymphoma (CTCL). Isoform 5A and isoform 5B are recognized by patients' sera with tumor specimen of various origins.,Disease:Tumor-associated antigen found in several cutaneous T-cell lymphoma (CTCL). Also found in colorectal and breast carcinomas, head and neck squamous cell carcinomas and melanoma.,Function:Tumor-associated antigen.,sequence Caution:Translation N-terminally extended.,similarity:Belongs to the cTAGE family.,tissue specificity:At the protein level, isoform 5A is expressed only in testis. Other isoforms are expressed in several other normal tissues, including brain, muscle and cranial skin. Isoform 5A (at the protein level) and isoform 5B are expressed in cutaneous T-cell lymphoma (CTCL) cell lines, colorectal carcinomas, breast carcinomas and melanoma. Isoform 5B, but not isoform 5A, is expressed in head and neck squamous cell carcinoma.,tissue specificity:Expressed in testis, placenta and skin. Expressed at lower level in mammary gland and stomach.,		

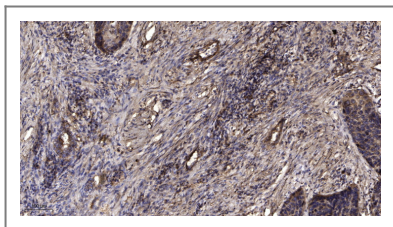
Validation Data



Western Blot analysis of HEPG2 cells using MIA2 Polyclonal Antibody diluted at 1:500. Secondary antibody(catalog#:RS0002) was diluted at 1:20000



Immunohistochemical analysis of paraffin-embedded human-pancreas, antibody was diluted at 1:200



Immunohistochemical analysis of paraffin-embedded human Squamous cell carcinoma of lung. 1, Antibody was diluted at 1:200(4° overnight). 2, Tris-EDTA,pH9.0 was used for antigen retrieval. 3,Secondary antibody was diluted at 1:200(room temperature, 45min).

| Contact information

Orders: order@immunoway.com
Support: tech@immunoway.com
Telephone: 877-594-3616 (Toll Free), 408-747-0185
Website: <http://www.immunoway.com>
Address: 2200 Ringwood Ave San Jose, CA 95131 USA



Please scan the QR code to access additional product information:
MIA2 Rabbit pAb

For Research Use Only. Not for Use in Diagnostic Procedures.

[Antibody](#) | [ELISA Kits](#) | [Protein](#) | [Reagents](#)