

## BATF3 Rabbit pAb

CatalogNo: YT5736

### Key Features

#### Host Species

- Rabbit

#### Reactivity

- Human, Mouse, Rat

#### Applications

- WB, IHC, IF, ELISA

#### MW

- 15kD (Observed)

#### Isotype

- IgG

### Recommended Dilution Ratios

**WB 1:500-1:2000**

**IHC: 1:100-1:300**

**ELISA 1:10000**

**IF 1:50-200**

### Storage

#### Storage\*

-15°C to -25°C/1 year (Do not lower than -25°C)

#### Formulation

Liquid in PBS containing 50% glycerol, 0.5% BSA and 0.02% sodium azide.

### Basic Information

#### Clonality

Polyclonal

### Immunogen Information

#### Immunogen

The antiserum was produced against synthesized peptide derived from the Internal region of human BATF3. AA range: 1-50

#### Specificity

BATF3 Polyclonal Antibody detects endogenous levels of BATF3 protein.

### Target Information

**Gene name** BATF3

**Protein Name** Basic leucine zipper transcriptional factor ATF-like 3

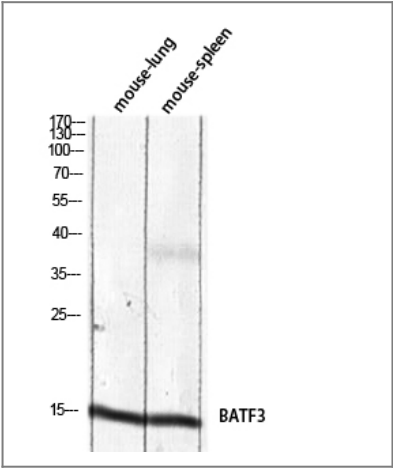
Organism	Gene ID	UniProt ID
Human	<a href="#">55509</a> ;	<a href="#">Q9NR55</a> ;
Mouse	<a href="#">381319</a> ;	<a href="#">Q9D275</a> ;
Rat		<a href="#">P97876</a> ;

**Cellular Localization** Nucleus .

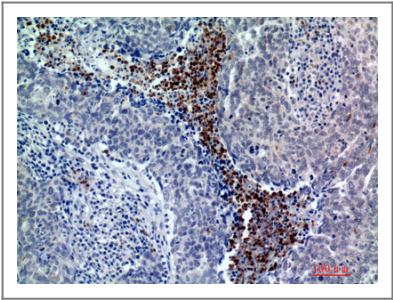
**Tissue specificity** Lung,

**Function** Function:Functions as a negative regulator of AP-1-mediated transcription by heterodimerizing with JUN and binding DNA at 12-O-tetradecanoylphorbol-13-acetate response elements (TRE) (consensus: 5'-TGA[CG]TCA-3'). Represses IL2 and MMP1 promoter activities.,similarity:Belongs to the bZIP family.,similarity:Contains 1 bZIP domain.,subunit:Interacts with JUN.,

| Validation Data



Western blot analysis of mouse-lung mouse-spleen lysis using BATF3 antibody. Antibody was diluted at 1:2000. Secondary antibody(catalog#:RS0002) was diluted at 1:20000 cells nucleus extracted by Minute TM Cytoplasmic and Nuclear Fractionation kit (SC-003,Inventbiotech,MN,USA).



Immunohistochemical analysis of paraffin-embedded human-breast-cancer, antibody was diluted at 1:200

| Contact information

Orders: [order@immunoway.com](mailto:order@immunoway.com)  
Support: [tech@immunoway.com](mailto:tech@immunoway.com)  
Telephone: 877-594-3616 (Toll Free), 408-747-0185  
Website: <http://www.immunoway.com>  
Address: 2200 Ringwood Ave San Jose, CA 95131 USA



Please scan the QR code  
to access additional  
product information:  
**BATF3 Rabbit pAb**

---

For Research Use Only. Not for Use in Diagnostic Procedures.

[Antibody](#) | [ELISA Kits](#) | [Protein](#) | [Reagents](#)