

## CD88 Rabbit pAb

CatalogNo: YT5710

### | Key Features

#### Host Species

- Rabbit

#### Reactivity

- Human,Rat,Mouse,

#### Applications

- WB,ELISA

#### MW

- 39kD (Observed)

#### Isotype

- IgG

### | Recommended Dilution Ratios

**WB 1:500-1:2000**

**ELISA 1:10000**

**Not yet tested in other applications.**

### | Storage

**Storage\*** -15°C to -25°C/1 year(Do not lower than -25°C)

**Formulation** Liquid in PBS containing 50% glycerol, 0.5% BSA and 0.02% sodium azide.

### | Basic Information

**Clonality** Polyclonal

### | Immunogen Information

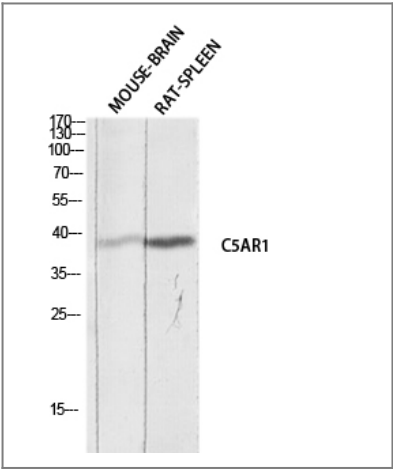
**Immunogen** The antiserum was produced against synthesized peptide derived from the N-terminal region of human C5AR1. AA range:1-50

**Specificity** CD88 Polyclonal Antibody detects endogenous levels of CD88 protein.

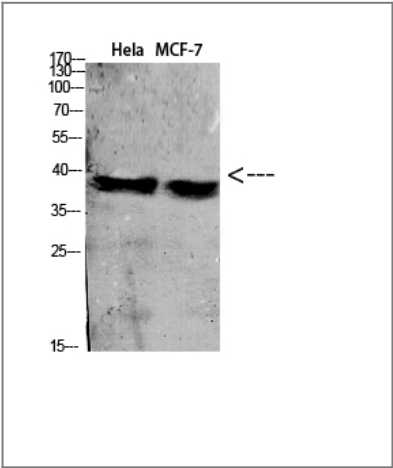
### | Target Information

Gene name	C5AR1		
Protein Name	C5a anaphylatoxin chemotactic receptor		
	Organism	Gene ID	UniProt ID
	Human	<a href="#">728</a> ;	<a href="#">P21730</a> ;
	Mouse		<a href="#">P30993</a> ;
Cellular Localization	Cell membrane ; Multi-pass membrane protein . Cytoplasmic vesicle . Phosphorylated C5aR colocalizes with ARRB1 and ARRB2 in cytoplasmic vesicles. .		
Tissue specificity	Brain,		
Function	Function:Receptor for the chemotactic and inflammatory peptide anaphylatoxin C5a. This receptor stimulates chemotaxis, granule enzyme release and superoxide anion production.,PTM:Sulfation plays a critical role in the association of the receptor with C5a, but no significant role in the ability of the receptor to transduce a signal and mobilize calcium in response to a small peptide agonist.,similarity:Belongs to the G-protein coupled receptor 1 family.,		

| Validation Data



Western blot analysis of MOUSE-BRAIN RAT-SPLEEN lysis using C5AR1 antibody. Antibody was diluted at 1:1000. Secondary antibody(catalog#:RS0002) was diluted at 1:20000



Western Blot analysis of various cells using Antibody diluted at 1:1000. Secondary antibody(catalog#:RS0002) was diluted at 1:20000

## | Contact information

Orders: order@immunoway.com  
Support: tech@immunoway.com  
Telephone: 877-594-3616 (Toll Free), 408-747-0185  
Website: <http://www.immunoway.com>  
Address: 2200 Ringwood Ave San Jose, CA 95131 USA



Please scan the QR code  
to access additional  
product information:  
**CD88 Rabbit pAb**

---

For Research Use Only. Not for Use in Diagnostic Procedures.

[Antibody](#) | [ELISA Kits](#) | [Protein](#) | [Reagents](#)