

## CD56 Rabbit pAb

CatalogNo: YT5708

### Key Features

#### Host Species

- Rabbit

#### Reactivity

- Human

#### Applications

- WB,IHC,IF,ELISA

#### MW

- 94kD (Observed)

#### Isotype

- IgG

### Recommended Dilution Ratios

IHC 1:200-1:1000

WB 1:500-1:2000

ELISA 1:10000

IF 1:50-200

### Storage

**Storage\*** -15°C to -25°C/1 year(Do not lower than -25°C)

**Formulation** Liquid in PBS containing 50% glycerol, 0.5% BSA and 0.02% sodium azide.

### Basic Information

**Clonality** Polyclonal

### Immunogen Information

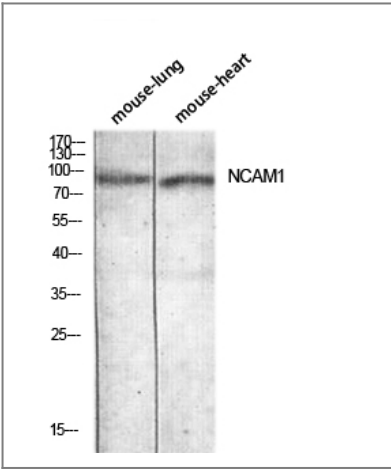
**Immunogen** The antiserum was produced against synthesized peptide derived from the Internal region of human NCAM1. AA range:250-300

**Specificity** CD56 Polyclonal Antibody detects endogenous levels of CD56 protein.

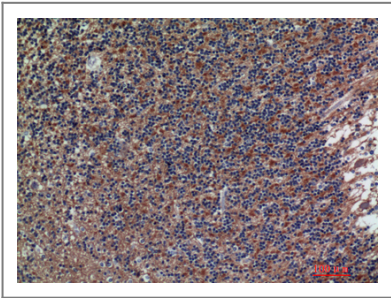
### Target Information

Gene name	NCAM1		
Protein Name	Neural cell adhesion molecule 1		
	Organism	Gene ID	UniProt ID
	Human	<a href="#">4684;</a>	<a href="#">P13591;</a>
	Mouse		<a href="#">P13595;</a>
Cellular Localization	[Isoform 1]: Cell membrane; Single-pass type I membrane protein.; [Isoform 2]: Cell membrane; Single-pass type I membrane protein.; [Isoform 3]: Cell membrane; Lipid-anchor, GPI-anchor.; [Isoform 4]: Cell membrane ; Lipid-anchor, GPI-anchor .; [Isoform 5]: Secreted.; [Isoform 6]: Secreted .		
Tissue specificity	Brain,Brain cortex,Kidney,Ovary,Plasma,Skeletal muscle,Testis,		
Function	Function:This protein is a cell adhesion molecule involved in neuron-neuron adhesion, neurite fasciculation, outgrowth of neurites, etc.,online information:N-CAM 140,online information:NCAM entry,similarity:Contains 2 fibronectin type-III domains.,similarity:Contains 5 Ig-like C2-type (immunoglobulin-like) domains.,		

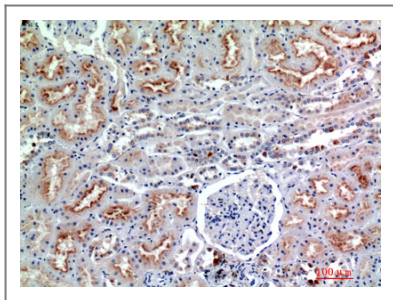
| Validation Data



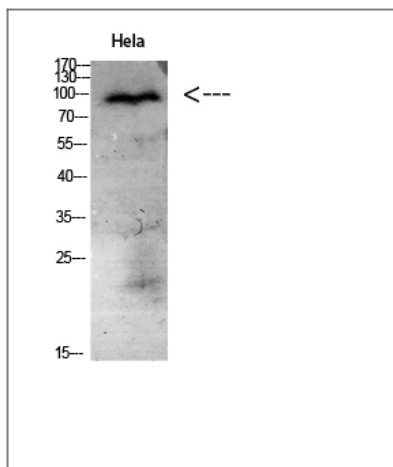
Western blot analysis of mouse-lung mouse-heart lysis using NCAM1 antibody. Antibody was diluted at 1:1000. Secondary antibody(catalog#:RS0002) was diluted at 1:20000



Immunohistochemical analysis of paraffin-embedded human-brain, antibody was diluted at 1:200



Immunohistochemical analysis of paraffin-embedded human-kidney, antibody was diluted at 1:200



Western Blot analysis of HeLa cells using Antibody diluted at 1:1000. Secondary antibody(catalog#:RS0002) was diluted at 1:20000

## Contact information

Orders: [order@immunoway.com](mailto:order@immunoway.com)  
 Support: [tech@immunoway.com](mailto:tech@immunoway.com)  
 Telephone: 877-594-3616 (Toll Free), 408-747-0185  
 Website: <http://www.immunoway.com>  
 Address: 2200 Ringwood Ave San Jose, CA 95131 USA



Please scan the QR code to access additional product information:  
**CD56 Rabbit pAb**

For Research Use Only. Not for Use in Diagnostic Procedures.

[Antibody](#) | [ELISA Kits](#) | [Protein](#) | [Reagents](#)