

Vitronectin Rabbit pAb

CatalogNo: YT5706

Key Features

Host Species

- Rabbit

Reactivity

- Human, Mouse

Applications

- WB, ELISA

MW

- 55kD (Observed)

Isotype

- IgG

Recommended Dilution Ratios

WB 1:500-1:2000

ELISA 1:10000

Not yet tested in other applications.

Storage

Storage*

-15°C to -25°C/1 year (Do not lower than -25°C)

Formulation

Liquid in PBS containing 50% glycerol, 0.5% BSA and 0.02% sodium azide.

Basic Information

Clonality

Polyclonal

Immunogen Information

Immunogen

The antiserum was produced against synthesized peptide derived from the Internal region of human VTN. AA range: 50-100

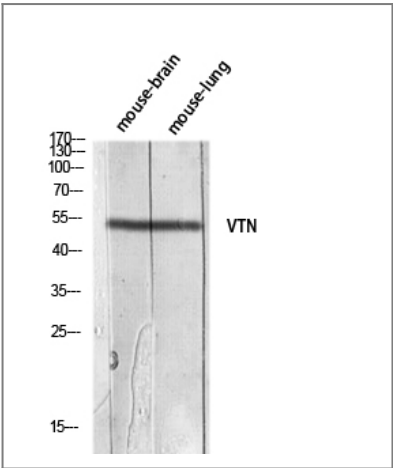
Specificity

Vitronectin Polyclonal Antibody detects endogenous levels of Vitronectin protein.

Target Information

Gene name	VTN		
Protein Name	Vitronectin		
	Organism	Gene ID	UniProt ID
	Human	7448;	P04004;
	Mouse	22370;	P29788;
Cellular Localization	Secreted, extracellular space .; Parasitophorous vacuole . (Microbial infection) In P.falciparum-infected red blood cells, VTN internalization is detected at the early trophozoite stage (PubMed:29567995). Colocalizes with SERA5 at the schizont stage and with SERA5 P47 at the merozoite surface (PubMed:29567995). .		
Tissue specificity	Expressed in the retina pigment epithelium (at protein level) (PubMed:25136834). Expressed in plasma (at protein level) (PubMed:2448300). Expressed in serum (at protein level) (PubMed:29567995).		
Function	Domain:The SMB domain mediates interaction with SERPINE1/PAI1. The heparin-binding domain mediates interaction with insulin.,Function:Somatomedin-B is a growth hormone-dependent serum factor with protease-inhibiting activity.,Function:Vitronectin is a cell adhesion and spreading factor found in serum and tissues. Vitronectin interact with glycosaminoglycans and proteoglycans. Is recognized by certain members of the integrin family and serves as a cell-to-substrate adhesion molecule. Inhibitor of the membrane-damaging effect of the terminal cytolytic complement pathway.,PTM:It has been suggested that the active SMB domain may be permitted considerable disulfide bond heterogeneity or variability, thus two alternate disulfide patterns based on 3D structures are described with 1 disulfide bond conserved in both.,PTM:N- and O-glycosylated.,PTM:Phosphorylation on Thr-69 and Thr-76 favors cell adhesion and spreading.,PTM:Sulfated on 2 tyrosine residues.,similarity:Contains 1 SMB (somatomedin-B) domain.,similarity:Contains 4 hemopexin-like domains.,subunit:Exists in two forms: a single chain 75 kDa form (V75) and a clipped form composed of two chains (65 kDa and 10 kDa) (V65+V10) which are held together by a disulfide bond. Interacts with SERPINE1/PAI1 and insulin.,tissue specificity:Plasma.,		

Validation Data



Western blot analysis of mouse-brain mouse-lung lysis using VTN antibody. Antibody was diluted at 1:1000. Secondary antibody(catalog#:RS0002) was diluted at 1:20000

| Contact information

Orders: order@immunoway.com
Support: tech@immunoway.com
Telephone: 877-594-3616 (Toll Free), 408-747-0185
Website: <http://www.immunoway.com>
Address: 2200 Ringwood Ave San Jose, CA 95131 USA



Please scan the QR code
to access additional
product information:
**Vitronectin Rabbit
pAb**

For Research Use Only. Not for Use in Diagnostic Procedures.

[Antibody](#) | [ELISA Kits](#) | [Protein](#) | [Reagents](#)