

## HGF Rabbit pAb

CatalogNo: YT5699

### | Key Features

#### Host Species

- Rabbit

#### Reactivity

- Human,Rat,Mouse,

#### Applications

- WB,IHC,IF,ELISA

#### MW

- 80kD (Observed)

#### Isotype

- IgG

### | Recommended Dilution Ratios

IHC: 100-300

WB 1:500-1:2000

ELISA 1:10000

IF 1:50-200

### | Storage

#### Storage\*

-15°C to -25°C/1 year(Do not lower than -25°C)

#### Formulation

Liquid in PBS containing 50% glycerol, 0.5% BSA and 0.02% sodium azide.

### | Basic Information

#### Clonality

Polyclonal

### | Immunogen Information

#### Immunogen

The antiserum was produced against synthesized peptide derived from the Internal region of human HGF. AA range:500-600

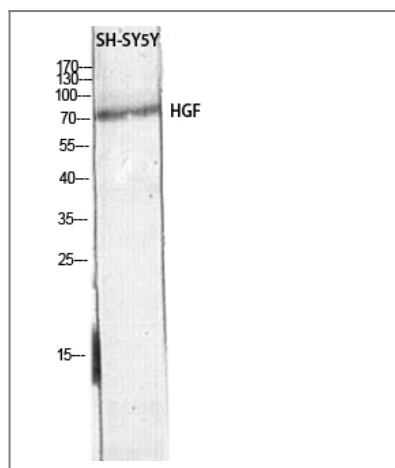
#### Specificity

HGF Polyclonal Antibody detects endogenous levels of HGF protein.

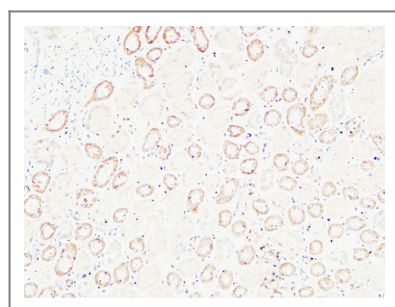
### | Target Information

<b>Gene name</b>	HGF		
<b>Protein Name</b>	Hepatocyte growth factor		
	<b>Organism</b>	<b>Gene ID</b>	<b>UniProt ID</b>
	Human	<a href="#">3082;</a>	<a href="#">P14210;</a>
	Mouse		<a href="#">Q08048;</a>
<b>Cellular Localization</b>	extracellular region,extracellular space,membrane,platelet alpha granule lumen,		
<b>Tissue specificity</b>	Brain,Embryonic fibroblast,Leukocyte,Liver,Lung fibroblast,Placenta,		
<b>Function</b>	Function:HGF is a potent mitogen for mature parenchymal hepatocyte cells, seems to be an hepatotrophic factor, and acts as growth factor for a broad spectrum of tissues and cell types. It has no detectable protease activity.,online information:Hepatocyte growth factor entry,similarity:Belongs to the peptidase S1 family. Plasminogen subfamily.,similarity:Contains 1 PAN domain.,similarity:Contains 1 peptidase S1 domain.,similarity:Contains 4 kringle domains.,subunit:Dimer of an alpha chain and a beta chain linked by a disulfide bond.,		

## Validation Data



Western blot analysis of SH-SY5Y lysis using HGF antibody. Antibody was diluted at 1:500. Secondary antibody(catalog#:RS0002) was diluted at 1:20000



Immunohistochemical analysis of paraffin-embedded Human kidney. 1, Antibody was diluted at 1:200(4° overnight). 2, High-pressure and temperature EDTA, pH8.0 was used for antigen retrieval. 3,Secondary antibody was diluted at 1:200(room temperature, 30min).

## Contact information

Orders: order@immunoway.com  
Support: tech@immunoway.com  
Telephone: 877-594-3616 (Toll Free), 408-747-0185  
Website: http://www.immunoway.com  
Address: 2200 Ringwood Ave San Jose, CA 95131 USA



Please scan the QR code  
to access additional  
product information:  
**HGF Rabbit pAb**

---

For Research Use Only. Not for Use in Diagnostic Procedures.

[Antibody](#) | [ELISA Kits](#) | [Protein](#) | [Reagents](#)