

## TASK-1 Rabbit pAb

CatalogNo: YT5689

### Key Features

#### Host Species

- Rabbit

#### Reactivity

- Human, Mouse, Rat

#### Applications

- WB, ELISA

#### MW

- 53kD (Observed)

#### Isotype

- IgG

### Recommended Dilution Ratios

**WB 1:500-1:2000**

**ELISA 1:10000**

**Not yet tested in other applications.**

### Storage

**Storage\*** -15°C to -25°C/1 year (Do not lower than -25°C)

**Formulation** Liquid in PBS containing 50% glycerol, 0.5% BSA and 0.02% sodium azide.

### Basic Information

**Clonality** Polyclonal

### Immunogen Information

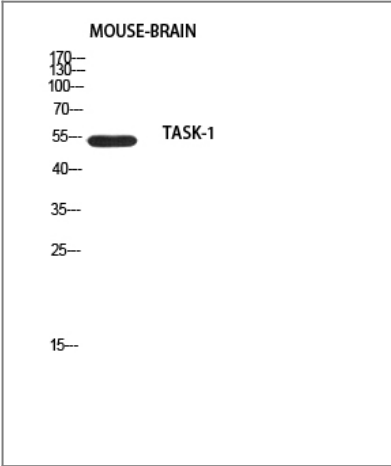
**Immunogen** The antiserum was produced against synthesized peptide derived from human TASK-1. AA range: 47-96

**Specificity** TASK-1 Polyclonal Antibody detects endogenous levels of TASK-1 protein.

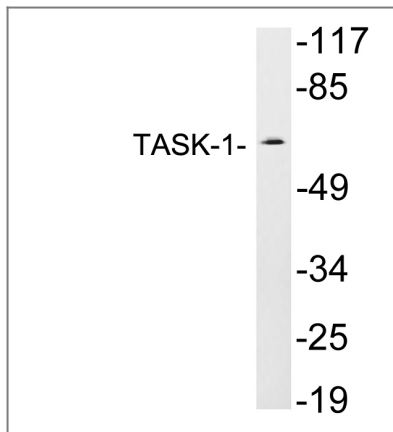
### Target Information

Gene name	KCNK3		
Protein Name	Potassium channel subfamily K member 3		
	Organism	Gene ID	UniProt ID
	Human	<a href="#">3777</a> ;	<a href="#">O14649</a> ;
	Mouse	<a href="#">16527</a> ;	<a href="#">O35111</a> ;
	Rat	<a href="#">29553</a> ;	<a href="#">O54912</a> ;
Cellular Localization	Cell membrane ; Multi-pass membrane protein .		
Tissue specificity	Widespread expression in adult. Strongest expression in pancreas and placenta. Lower expression in brain, lung, prostate, heart, kidney, uterus, small intestine and colon.		
Function	Function:pH-dependent, voltage-insensitive, background potassium channel protein. Rectification direction results from potassium ion concentration on either side of the membrane. Acts as an outward rectifier when external potassium concentration is low. When external potassium concentration is high, current is inward.,miscellaneous:Inhibited by external acidification. Activated by halothane and isoflurane.,similarity:Belongs to the two pore domain potassium channel (TC 1.A.1.8) family.,tissue specificity:Widespread expression in adult. Strongest expression in pancreas and placenta. Lower expression in brain, lung, prostate, heart, kidney, uterus, small intestine and colon.,		

Validation Data



Western blot analysis of mouse-brain using TASK-1 antibody. Antibody was diluted at 1:500. Secondary antibody(catalog#:RS0002) was diluted at 1:20000



Western blot analysis of lysates from JAR cells, using TASK-1 antibody.

## Contact information

Orders: [order@immunoway.com](mailto:order@immunoway.com)  
Support: [tech@immunoway.com](mailto:tech@immunoway.com)  
Telephone: 877-594-3616 (Toll Free), 408-747-0185  
Website: <http://www.immunoway.com>  
Address: 2200 Ringwood Ave San Jose, CA 95131 USA



Please scan the QR code  
to access additional  
product information:  
**TASK-1 Rabbit pAb**

For Research Use Only. Not for Use in Diagnostic Procedures.

[Antibody](#) | [ELISA Kits](#) | [Protein](#) | [Reagents](#)