

CD269 Rabbit pAb

CatalogNo: YT5687

Key Features

Host Species

- Rabbit

Reactivity

- Human, Mouse

Applications

- WB, ELISA

MW

- 20kD (Observed)

Isotype

- IgG

Recommended Dilution Ratios

WB 1:500-1:2000

ELISA 1:10000

Not yet tested in other applications.

Storage

Storage*

-15°C to -25°C/1 year (Do not lower than -25°C)

Formulation

Liquid in PBS containing 50% glycerol, 0.5% BSA and 0.02% sodium azide.

Basic Information

Clonality

Polyclonal

Immunogen Information

Immunogen

Synthesized peptide derived from the Internal region of human CD269.

Specificity

CD269 Polyclonal Antibody detects endogenous levels of CD269 protein.

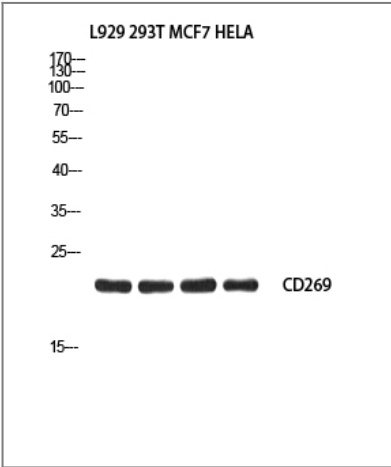
Target Information

Gene name

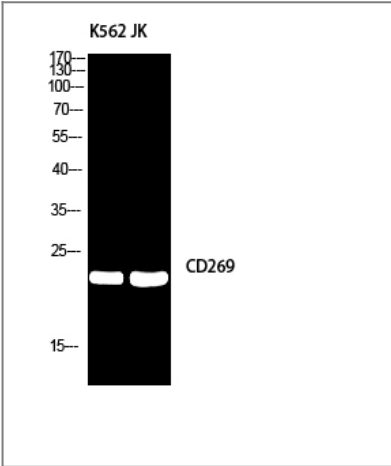
TNFRSF17 BCM BCMA

Protein Name	Tumor necrosis factor receptor superfamily member 17		
	Organism	Gene ID	UniProt ID
	Human	608;	Q02223;
	Mouse		O88472;
Cellular Localization	Cell membrane; Single-pass type III membrane protein. Endomembrane system; Single-pass type III membrane protein. Perinuclear Golgi-like structures.		
Tissue specificity	Expressed in mature B-cells, but not in T-cells or monocytes.		
Function	Disease:A chromosomal aberration involving TNFRSF17 is found in a form of T-cell acute lymphoblastic leukemia (T-ALL). Translocation t(4;16)(q26;p13) with IL2.,Function:Receptor for TNFSF13B/BLyS/BAFF and TNFSF13/APRIL. Promotes B-cell survival and plays a role in the regulation of humoral immunity. Activates NF-kappa-B and JNK.,similarity:Contains 1 TNFR-Cys repeat.,subcellular location:Perinuclear Golgi-like structures.,subunit:Associates with TRAF1, TRAF2, TRAF3, TRAF5 and TRAF6.,tissue specificity:Expressed in mature B-cells, but not in T-cells or monocytes.,		

| Validation Data



Western blot analysis of L929 293T MCF7 HELA using CD269 antibody. Antibody was diluted at 1:2000. Secondary antibody(catalog#:RS0002) was diluted at 1:20000



Western blot analysis of K562/JK using CD269 antibody. Antibody was diluted at 1:2000. Secondary antibody(catalog#:RS0002) was diluted at 1:20000

| Contact information

Orders: order@immunoway.com
Support: tech@immunoway.com
Telephone: 877-594-3616 (Toll Free), 408-747-0185
Website: <http://www.immunoway.com>
Address: 2200 Ringwood Ave San Jose, CA 95131 USA



Please scan the QR code
to access additional
product information:
CD269 Rabbit pAb

For Research Use Only. Not for Use in Diagnostic Procedures.

[Antibody](#) | [ELISA Kits](#) | [Protein](#) | [Reagents](#)