

## PI 3-Kinase C2γ Rabbit pAb

CatalogNo: YT5683

### Key Features

#### Host Species

- Rabbit

#### Reactivity

- Human,Rat,Mouse,

#### Applications

- WB,IHC

#### MW

- 160kD (Observed)

#### Isotype

- IgG

### Recommended Dilution Ratios

WB 1:500-2000

IHC 1:50-300

### Storage

**Storage\*** -15°C to -25°C/1 year(Do not lower than -25°C)

**Formulation** Liquid in PBS containing 50% glycerol, 0.5% BSA and 0.02% sodium azide.

### Basic Information

**Clonality** Polyclonal

### Immunogen Information

**Immunogen** Synthesized peptide derived from the N-terminal region of human PI 3-Kinase C2γ.

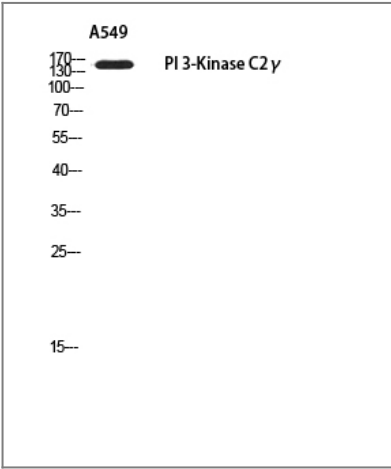
**Specificity** PI 3-Kinase C2γ Polyclonal Antibody detects endogenous levels of PI 3-Kinase C2γ protein.

### Target Information

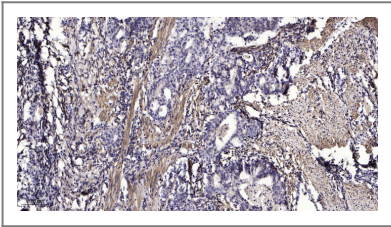
**Gene name** PIK3C2G

<b>Protein Name</b>	Phosphatidylinositol 4-phosphate 3-kinase C2 domain-containing subunit gamma		
	<b>Organism</b>	<b>Gene ID</b>	<b>UniProt ID</b>
	Human	<a href="#">5288;</a>	<a href="#">O75747;</a>
	Mouse		<a href="#">O70167;</a>
<b>Cellular Localization</b>	Membrane ; Peripheral membrane protein .		
<b>Tissue specificity</b>	Highly expressed in liver, prostate and testis. Lower levels in small intestine, kidney and pancreas.		
<b>Function</b>	Catalytic activity:ATP + 1-phosphatidyl-1D-myo-inositol 4-phosphate = ADP + 1-phosphatidyl-1D-myo-inositol 3,4-bisphosphate.,Function:In vitro, phosphorylates PtdIns and PtdIns4P but not PtdIns(4,5)P2.,similarity:Belongs to the PI3/PI4-kinase family.,similarity:Contains 1 C2 domain.,similarity:Contains 1 PI3K/PI4K domain.,similarity:Contains 1 PX (phox homology) domain.,tissue specificity:Highly expressed in liver, prostate and testis. Lower levels in small intestine, kidney and pancreas.,		

| Validation Data



Western blot analysis of A549 using PI 3-Kinase C2γ antibody. Secondary antibody(catalog#:RS0002) was diluted at 1:20000



Immunohistochemical analysis of paraffin-embedded human Gastric adenocarcinoma. 1, Antibody was diluted at 1:200(4° overnight). 2, Tris-EDTA,pH9.0 was used for antigen retrieval. 3,Secondary antibody was diluted at 1:200(room temperature, 45min).

| Contact information

Orders: [order@immunoway.com](mailto:order@immunoway.com)  
Support: [tech@immunoway.com](mailto:tech@immunoway.com)  
Telephone: 877-594-3616 (Toll Free), 408-747-0185  
Website: <http://www.immunoway.com>  
Address: 2200 Ringwood Ave San Jose, CA 95131 USA



Please scan the QR code  
to access additional  
product information:  
**PI 3-Kinase C2γ**  
**Rabbit pAb**

---

For Research Use Only. Not for Use in Diagnostic Procedures.

[Antibody](#) | [ELISA Kits](#) | [Protein](#) | [Reagents](#)