

GDF-6 Rabbit pAb

CatalogNo: YT5653

Orthogonal Validated 

Key Features

Host Species

- Rabbit

Reactivity

- Human, Mouse, Rat

Applications

- WB, ELISA

MW

- 50kD (Observed)

Isotype

- IgG

Recommended Dilution Ratios

WB 1:500-1:2000**ELISA 1:10000****Not yet tested in other applications.**

Storage

Storage*

-15°C to -25°C/1 year (Do not lower than -25°C)

Formulation

Liquid in PBS containing 50% glycerol, 0.5% BSA and 0.02% sodium azide.

Basic Information

Clonality

Polyclonal

Immunogen Information

Immunogen

The antiserum was produced against synthesized peptide derived from the Internal region of human GDF6. AA range: 311-360

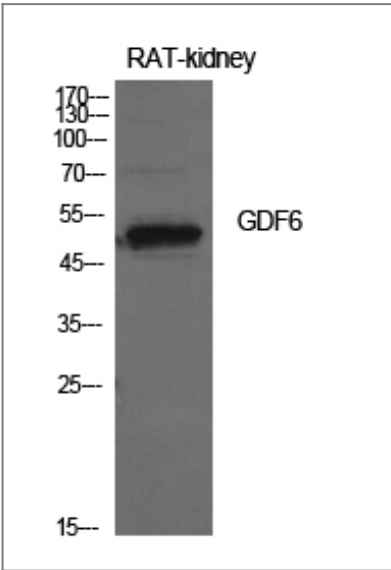
Specificity

GDF-6 Polyclonal Antibody detects endogenous levels of GDF-6 protein.

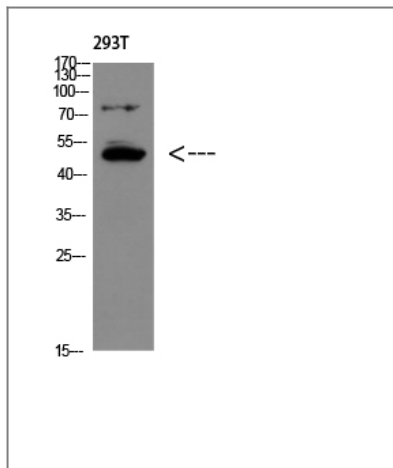
Target Information

Gene name	GDF6		
Protein Name	Growth/differentiation factor 6		
	Organism	Gene ID	UniProt ID
	Human	392255;	Q6KF10;
	Mouse	242316;	P43028;
	Rat	252834;	Q6HA10;
Cellular Localization	Secreted .		
Tissue specificity	Hindbrain,Testis,		
Function	<p>Disease:A chromosomal aberration involving GDF6 is associated with Klippel-Feil syndrome (KFS) [MIM:118100]. Paracentric inv(8)(q22;q23.3).,Disease:Defects in GDF6 are associated with Klippel-Feil syndrome (KFS) [MIM:118100]. Klippel-Feil syndrome is a complex skeletal disorder characterized by congenital fusion of vertebrae within the anterior/cervical spine. Vertebral fusion appears to be caused by a failure in the normal segmentation of vertebrae during the early weeks of fetal development and defective somitogenesis has been postulated as a mitigating factor. However, the etiology of KFS is still unknown and no definitive disease-causing genes have yet been identified. Although most cases are sporadic, both autosomal dominant and autosomal recessive inheritance have been reported.,Function:Required for normal formation of bones and joints in the limbs, skull, and axial skeleton. Play a key role in establishing boundaries between skeletal elements during development.,similarity:Belongs to the TGF-beta family.,subunit:Homodimer; disulfide-linked.,</p>		

| Validation Data



Western Blot analysis of rat kidney cells using GDF-6 Polyclonal Antibody. Antibody was diluted at 1:500. Secondary antibody(catalog#:RS0002) was diluted at 1:20000



Western Blot analysis of 293T using GDF-6 Polyclonal Antibody diluted at 1:500. Secondary antibody(catalog#:RS0002) was diluted at 1:20000

Contact information

Orders: order@immunoway.com
Support: tech@immunoway.com
Telephone: 877-594-3616 (Toll Free), 408-747-0185
Website: <http://www.immunoway.com>
Address: 2200 Ringwood Ave San Jose, CA 95131 USA



Please scan the QR code
to access additional
product information:
GDF-6 Rabbit pAb

For Research Use Only. Not for Use in Diagnostic Procedures.

[Antibody](#) | [ELISA Kits](#) | [Protein](#) | [Reagents](#)