

Ebi3 Rabbit pAb

CatalogNo: YT5645

| Key Features

Host Species

- Rabbit

Reactivity

- Human, Mouse

Applications

- WB, ELISA

MW

- 25kD (Observed)

Isotype

- IgG

| Recommended Dilution Ratios

WB 1:500-1:2000

ELISA 1:10000

Not yet tested in other applications.

| Storage

Storage*

-15°C to -25°C/1 year (Do not lower than -25°C)

Formulation

Liquid in PBS containing 50% glycerol, 0.5% BSA and 0.02% sodium azide.

| Basic Information

Clonality

Polyclonal

| Immunogen Information

Immunogen

The antiserum was produced against synthesized peptide derived from the Internal region of human EBI3. AA range: 101-150

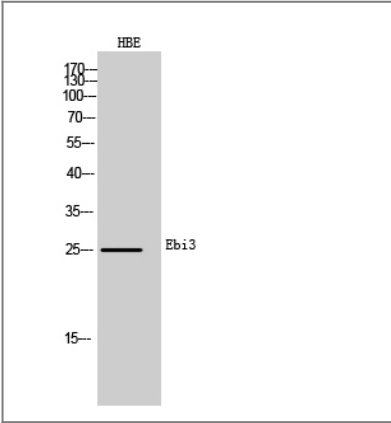
Specificity

Ebi3 Polyclonal Antibody detects endogenous levels of Ebi3 protein.

| Target Information

Gene name	EBI3		
Protein Name	Interleukin-27 subunit beta		
	Organism	Gene ID	UniProt ID
	Human	10148;	Q14213;
	Mouse	50498;	O35228;
Cellular Localization	Secreted .		
Tissue specificity	B-cell,Pancreas,		
Function	Function:Cytokine with pro- and anti-inflammatory properties, that can regulate T helper cell development, suppress T-cell proliferation, stimulate cytotoxic T cell activity, induce isotype switching in B-cells, and that has diverse effects on innate immune cells. Among its target cells are CD4 T helper cells which can differentiate in type 1 effector cells (TH1), type 2 effector cells (TH2) and IL17 producing helper T-cells (TH17). It drives rapid clonal expansion of naive but not memory CD4 T-cells. It also strongly synergizes with IL-12 to trigger interferon-gamma/IFN-gamma production of naive CD4 T-cells, binds to the cytokine receptor WSX-1/TCCR. Another important role of IL27 is its antitumor activity as well as its antiangiogenic activity with activation of production of antiangiogenic chemokines.,induction:By EBV.,online information:Interleukin-27 entry,similarity:Belongs to the type I cytokine receptor family. Type 3 subfamily.,similarity:Contains 2 fibronectin type-III domains.,subunit:Heterodimer with IL27. IL-27 is an heterodimer composed IL27 and EBI3. EBI3 is also a component of the IL-12 heterodimer. Interacts with SQSTM1.,		

Validation Data



Western Blot analysis of HBE cells using Ebi3 Polyclonal Antibody. Secondary antibody(catalog#:RS0002) was diluted at 1:20000

Contact information

Orders: order@immunoway.com
Support: tech@immunoway.com
Telephone: 877-594-3616 (Toll Free), 408-747-0185
Website: <http://www.immunoway.com>
Address: 2200 Ringwood Ave San Jose, CA 95131 USA



Please scan the QR code
to access additional
product information:
Ebi3 Rabbit pAb

For Research Use Only. Not for Use in Diagnostic Procedures.

[Antibody](#) | [ELISA Kits](#) | [Protein](#) | [Reagents](#)