

## CD315 Rabbit pAb

CatalogNo: YT5637

### | Key Features

#### Host Species

- Rabbit

#### Reactivity

- Human, Mouse, Rat

#### Applications

- WB, IHC, IF, ELISA

#### MW

- 98kD (Observed)

#### Isotype

- IgG

### | Recommended Dilution Ratios

**WB 1:500-1:2000**

**IHC: 1:100-300**

**ELISA 1:20000**

**IF 1:100-300**

**Not yet tested in other applications.**

### | Storage

#### Storage\*

-15°C to -25°C/1 year (Do not lower than -25°C)

#### Formulation

Liquid in PBS containing 50% glycerol, 0.5% BSA and 0.02% sodium azide.

### | Basic Information

#### Clonality

Polyclonal

### | Immunogen Information

#### Immunogen

The antiserum was produced against synthesized peptide derived from the Internal region of human PTGFRN. AA range: 601-650

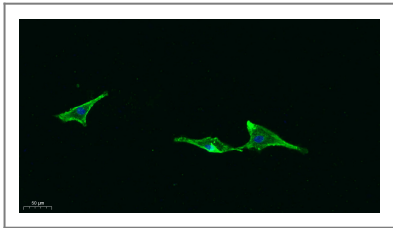
#### Specificity

CD315 Polyclonal Antibody detects endogenous levels of CD315 protein.

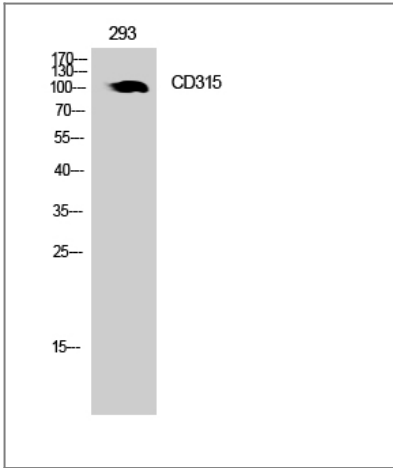
## | Target Information

Gene name	PTGFRN		
Protein Name	Prostaglandin F2 receptor negative regulator		
	Organism	Gene ID	UniProt ID
	Human	<a href="#">5738</a> ;	<a href="#">Q9P2B2</a> ;
	Mouse	<a href="#">19221</a> ;	<a href="#">Q9WV91</a> ;
	Rat	<a href="#">29602</a> ;	<a href="#">Q62786</a> ;
Cellular Localization	Endoplasmic reticulum membrane ; Single-pass type I membrane protein . Golgi apparatus, trans-Golgi network membrane ; Single-pass type I membrane protein .		
Tissue specificity	Brain,Embryo,Epithelium,Heart,Liver,PCR rescued clones,		
Function	Function:Inhibits the binding of prostaglandin F2-alpha (PGF2-alpha) to its specific FP receptor, by decreasing the receptor number rather than the affinity constant. Functional coupling with the prostaglandin F2-alpha receptor seems to occur.,sequence Caution:Translated as Gln.,similarity:Contains 6 Ig-like C2-type (immunoglobulin-like) domains.,subunit:Interacts with CD9 and CD81. Also seems to interacts with CD63, CD82 and CD151.,		

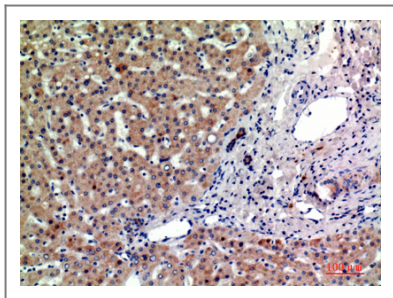
## | Validation Data



Immunofluorescence analysis of A549. 1,primary Antibody was diluted at 1:200(4°C overnight). 2, Goat Anti Rabbit IgG (H&L) - Alexa Fluor 488 Secondary antibody was diluted at 1:1000(room temperature, 50min).3, DAPI(blue) 10min.



Western Blot analysis of 293 cells using CD315 Polyclonal Antibody. Secondary antibody(catalog#:RS0002) was diluted at 1:20000



Immunohistochemical analysis of paraffin-embedded human-liver, antibody was diluted at 1:200

## **Contact information**

Orders: [order@immunoway.com](mailto:order@immunoway.com)  
Support: [tech@immunoway.com](mailto:tech@immunoway.com)  
Telephone: 877-594-3616 (Toll Free), 408-747-0185  
Website: <http://www.immunoway.com>  
Address: 2200 Ringwood Ave San Jose, CA 95131 USA



Please scan the QR code  
to access additional  
product information:  
**CD315 Rabbit pAb**

---

For Research Use Only. Not for Use in Diagnostic Procedures.

[Antibody](#) | [ELISA Kits](#) | [Protein](#) | [Reagents](#)