

CD85d Rabbit pAb

CatalogNo: YT5595

Key Features

Host Species

- Rabbit

Reactivity

- Human

Applications

- WB,ELISA

MW

- 66kD (Observed)

Isotype

- IgG

Recommended Dilution Ratios

WB 1:500-1:2000

ELISA 1:10000

Not yet tested in other applications.

Storage

Storage*

-15°C to -25°C/1 year(Do not lower than -25°C)

Formulation

Liquid in PBS containing 50% glycerol, 0.5% BSA and 0.02% sodium azide.

Basic Information

Clonality

Polyclonal

Immunogen Information

Immunogen

The antiserum was produced against synthesized peptide derived from the Internal region of human LILRB2. AA range:121-170

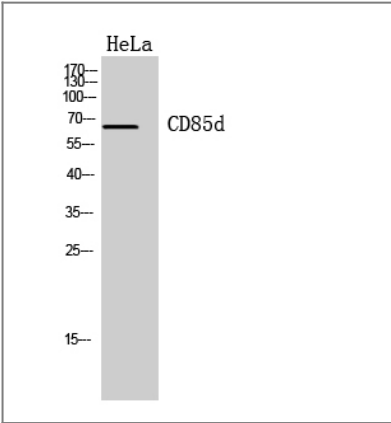
Specificity

CD85d Polyclonal Antibody detects endogenous levels of CD85d protein.

Target Information

| | | | |
|-----------------------|--|-------------------------|--------------------------|
| Gene name | LILRB2 | | |
| Protein Name | Leukocyte immunoglobulin-like receptor subfamily B member 2 | | |
| | Organism | Gene ID | UniProt ID |
| | Human | 10288 ; | Q8N423 ; |
| Cellular Localization | Cell membrane ; Single-pass type I membrane protein. | | |
| Tissue specificity | Expressed in monocytes and at lower levels in myeloid and plasmacytoid dendritic cells. Expressed in tolerogenic IL10-producing dendritic cells (PubMed:20448110). Expressed in myeloid-derived suppressor cells during pregnancy (PubMed:27859042). Detected at low levels in natural killer (NK) cells. Expressed in B cells. | | |
| Function | Domain:Contains 3 copies of a cytoplasmic motif that is referred to as the immunoreceptor tyrosine-based inhibitor motif (ITIM). This motif is involved in modulation of cellular responses. The phosphorylated ITIM motif can bind the SH2 domain of several SH2-containing phosphatases.,Function:Receptor for class I MHC antigens. Recognizes a broad spectrum of HLA-A, HLA-B, HLA-C and HLA-G alleles. Involved in the down-regulation of the immune response and the development of tolerance. Competes with CD8A for binding to class I MHC antigens. Inhibits FCGR1A-mediated phosphorylation of cellular proteins and mobilization of intracellular calcium ions.,PTM:Phosphorylated on tyrosine residues. Dephosphorylated by PTPN6.,similarity:Contains 4 Ig-like C2-type (immunoglobulin-like) domains.,subunit:Binds PTPN6 when phosphorylated. Binds FCGR1A.,tissue specificity:Expressed on monocytes and B-cells, and at lower levels on dendritic cells. Detected at low levels in natural killer (NK) cells., | | |

Validation Data



Western Blot analysis of Hela cells using CD85d Polyclonal Antibody. Secondary antibody(catalog#:RS0002) was diluted at 1:20000

Contact information

Orders: order@immunoway.com
Support: tech@immunoway.com
Telephone: 877-594-3616 (Toll Free), 408-747-0185
Website: <http://www.immunoway.com>
Address: 2200 Ringwood Ave San Jose, CA 95131 USA



Please scan the QR code
to access additional
product information:
CD85d Rabbit pAb

For Research Use Only. Not for Use in Diagnostic Procedures.

[Antibody](#) | [ELISA Kits](#) | [Protein](#) | [Reagents](#)