

CD66c/d Rabbit pAb

CatalogNo: YT5594

Key Features

Host Species

- Rabbit

Reactivity

- Human,Rat

Applications

- WB,ELISA

MW

- 30kD (Observed)

Isotype

- IgG

Recommended Dilution Ratios

WB 1:500-1:2000

ELISA 1:10000

Not yet tested in other applications.

Storage

Storage* -15°C to -25°C/1 year(Do not lower than -25°C)

Formulation Liquid in PBS containing 50% glycerol, 0.5% BSA and 0.02% sodium azide.

Basic Information

Clonality Polyclonal

Immunogen Information

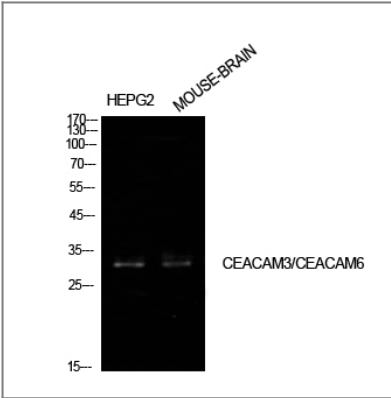
Immunogen The antiserum was produced against synthesized peptide derived from the Internal region of human CEACAM3/CEACAM6. AA range:31-80

Specificity CD66c/d Polyclonal Antibody detects endogenous levels of CD66c/d protein.

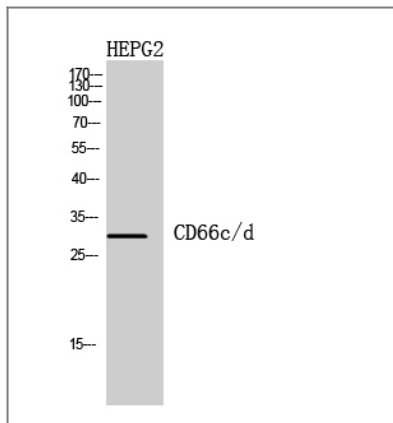
Target Information

| | | | |
|-----------------------|---|---|---|
| Gene name | CEACAM3/CEACAM6 | | |
| Protein Name | Carcinoembryonic antigen-related cell adhesion molecule 3/Carcinoembryonic antigen-related cell adhesion molecule 6 | | |
| | Organism | Gene ID | UniProt ID |
| | Human | 1084 ; 4680 ; | P40198 ; P40199 ; |
| Cellular Localization | Membrane; Single-pass type I membrane protein. | | |
| Tissue specificity | CGM1a, the predominant CGM1 transcript, is granulocyte-specific. Not detected out of the granulocytic lineage, such as monocytes, lymphocytes, spleen, testis, colon, brain, liver, pancreas, thymus, ovary, placenta, skeletal muscle, prostate, small intestine, heart, lung and kidney. | | |
| Function | <p>Caution:This is not the ortholog of rat CEACAM3.,Domain:The cytosolic domain is involved in S100A9 interaction.,Function:Major granulocyte receptor mediating recognition and efficient opsonin-independent phagocytosis of CEACAM-binding microorganisms, including Neissiria, Moxarella and Haemophilus species, thus playing an important role in the clearance of pathogens by the innate immune system. Responsible for RAC1 stimulation in the course of pathogen phagocytosis.,PTM:Tyrosine-phosphorylated in response to microbial binding. Tyr-230 and Tyr-241 are both required for phosphorylation to be detected.,similarity:Belongs to the immunoglobulin superfamily. CEA family.,similarity:Contains 1 Ig-like V-type (immunoglobulin-like) domain.,subunit:Interacts with S100A9/calprotectin. This interaction is calcium-dependent, but independent of CEACAM3 phosphorylation.,tissue specificity:CGM1a, the predominant CGM1 transcript, is granulocyte-specific. Not detected out of the granulocytic lineage, such as monocytes, lymphocytes, spleen, testis, colon, brain, liver, pancreas, thymus, ovary, placenta, skeletal muscle, prostate, small intestine, heart, lung and kidney.,</p> | | |

| Validation Data



Western Blot analysis of HepG2, mouse brain cells using CD66c/d Polyclonal Antibody. Antibody was diluted at 1:1000. Secondary antibody(catalog#:RS0002) was diluted at 1:20000



Western Blot analysis of HEPG2 cells using CD66c/d Polyclonal Antibody diluted at 1:1000. Secondary antibody(catalog#:RS0002) was diluted at 1:20000

Contact information

Orders: order@immunoway.com
Support: tech@immunoway.com
Telephone: 877-594-3616 (Toll Free), 408-747-0185
Website: <http://www.immunoway.com>
Address: 2200 Ringwood Ave San Jose, CA 95131 USA



Please scan the QR code to access additional product information:
CD66c/d Rabbit pAb

For Research Use Only. Not for Use in Diagnostic Procedures.

[Antibody](#) | [ELISA Kits](#) | [Protein](#) | [Reagents](#)