

## CD39 Rabbit pAb

CatalogNo: YT5586

### Key Features

#### Host Species

- Rabbit

#### Reactivity

- Human, Mouse, Rat

#### Applications

- WB, ELISA

#### MW

- 56kD (Observed)

#### Isotype

- IgG

### Recommended Dilution Ratios

**WB 1:500-1:2000**

**ELISA 1:10000**

**Not yet tested in other applications.**

### Storage

#### Storage\*

-15°C to -25°C/1 year (Do not lower than -25°C)

#### Formulation

Liquid in PBS containing 50% glycerol, 0.5% BSA and 0.02% sodium azide.

### Basic Information

#### Clonality

Polyclonal

### Immunogen Information

#### Immunogen

The antiserum was produced against synthesized peptide derived from the Internal region of human ENTPD1. AA range: 31-80

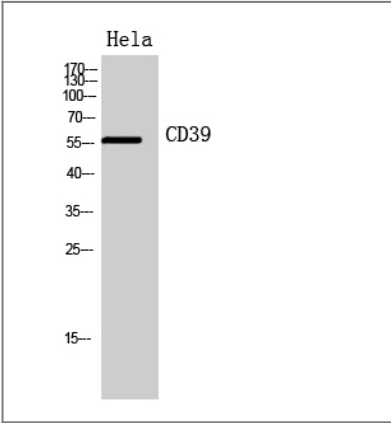
#### Specificity

CD39 Polyclonal Antibody detects endogenous levels of CD39 protein.

### Target Information

Gene name	ENTPD1		
Protein Name	Ectonucleoside triphosphate diphosphohydrolase 1		
	Organism	Gene ID	UniProt ID
	Human	<a href="#">953</a> ;	<a href="#">P49961</a> ;
	Mouse	<a href="#">12495</a> ;	<a href="#">P55772</a> ;
	Rat	<a href="#">64519</a> ;	<a href="#">P97687</a> ;
Cellular Localization	Membrane ; Multi-pass membrane protein .		
Tissue specificity	Expressed primarily on activated lymphoid cells. Also expressed in endothelial tissues. Isoform 1 and isoform 3 are present in both placenta and umbilical vein, whereas isoform 2 is present in placenta only.		
Function	Catalytic activity:ATP + 2 H(2)O = AMP + 2 phosphate.,cofactor:Calcium.,cofactor:Magnesium.,Function:In the nervous system, could hydrolyze ATP and other nucleotides to regulate purinergic neurotransmission. Could also be implicated in the prevention of platelet aggregation. Hydrolyzes ATP and ADP equally well.,PTM:Palmitoylated in the N-terminal part.,PTM:The N-terminus is blocked.,similarity:Belongs to the GDA1/CD39 NTPase family.,subunit:Homodimer; disulfide-linked.,tissue specificity:Expressed primarily on activated lymphoid cells. Also expressed in endothelial tissues. The vascular isoform and the placental isoform II are present in both placenta and umbilical vein, whereas placental isoform I is present in placenta only.,		

| Validation Data



Western Blot analysis of HeLa cells using CD39 Polyclonal Antibody. Secondary antibody(catalog#:RS0002) was diluted at 1:20000

| Contact information

Orders: order@immunoway.com  
Support: tech@immunoway.com  
Telephone: 877-594-3616 (Toll Free), 408-747-0185  
Website: http://www.immunoway.com  
Address: 2200 Ringwood Ave San Jose, CA 95131 USA



Please scan the QR code  
to access additional  
product information:  
**CD39 Rabbit pAb**

---

For Research Use Only. Not for Use in Diagnostic Procedures.

[Antibody](#) | [ELISA Kits](#) | [Protein](#) | [Reagents](#)