

Talin-1 Rabbit pAb

CatalogNo: YT5576

Key Features

Host Species

- Rabbit

Reactivity

- Human, Mouse, Rat

Applications

- WB, IHC, IF, ELISA

MW

- 269kD (Observed)

Isotype

- IgG

Recommended Dilution Ratios

WB 1:500-1:2000

IHC: 1:100-300

ELISA 1:20000

IF 1:100-300

Not yet tested in other applications.

Storage

Storage*

-15°C to -25°C/1 year (Do not lower than -25°C)

Formulation

Liquid in PBS containing 50% glycerol, 0.5% BSA and 0.02% sodium azide.

Basic Information

Clonality

Polyclonal

Immunogen Information

Immunogen

The antiserum was produced against synthesized peptide derived from the C-terminal region of human TLN1. AA range: 2471-2520

Specificity

Talin-1 Polyclonal Antibody detects endogenous levels of Talin-1 protein.

| Target Information

Gene name TLN1

Protein Name Talin-1

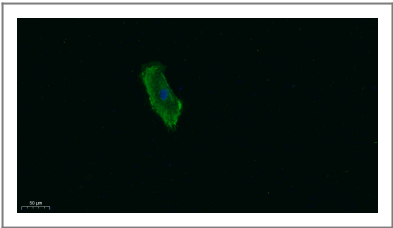
Organism	Gene ID	UniProt ID
Human	7094 ;	Q9Y490 ;
Mouse	21894 ;	P26039 ;

Cellular Localization Cell projection, ruffle membrane ; Peripheral membrane protein ; Cytoplasmic side . Cytoplasm, cytoskeleton . Cell surface . Cell junction, focal adhesion . Colocalizes with LAYN at the membrane ruffles. Localized preferentially in focal adhesions than fibrillar adhesions (By similarity). .

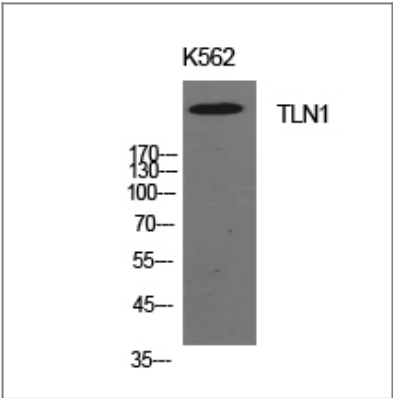
Tissue specificity Aorta,Brain,Embryonic carcinoma,Platelet,

Function Function:Probably involved in connections of major cytoskeletal structures to the plasma membrane. High molecular weight cytoskeletal protein concentrated at regions of cell-substratum contact and, in lymphocytes, at cell-cell contacts.,similarity:Contains 1 FERM domain.,similarity:Contains 1 I/LWEQ domain.,subcellular location:Colocalizes with LAYN at the membrane ruffles.,subunit:Binds with high affinity to vinculin and with low affinity to integrins. Interacts with PIP5K1C and NRAP. Interacts with LAYN. Interacts with SYNM.,

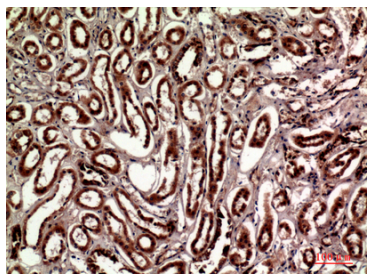
| Validation Data



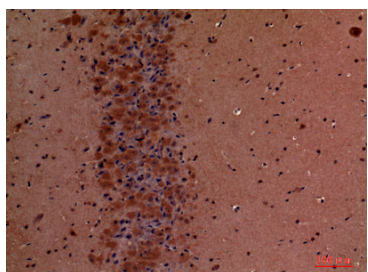
Immunofluorescence analysis of A549. 1,primary Antibody was diluted at 1:200(4°C overnight). 2, Goat Anti Rabbit IgG (H&L) - Alexa Fluor 488 Secondary antibody was diluted at 1:1000(room temperature, 50min).3, DAPI(blue) 10min.



Western Blot analysis of K562 cells using Talin-1 Polyclonal Antibody. Antibody was diluted at 1:1000. Secondary antibody(catalog#:RS0002) was diluted at 1:20000



Immunohistochemical analysis of paraffin-embedded human-kidney, antibody was diluted at 1:100



Immunohistochemical analysis of paraffin-embedded mouse-brain, antibody was diluted at 1:100

Contact information

Orders: order@immunoway.com
Support: tech@immunoway.com
Telephone: 877-594-3616 (Toll Free), 408-747-0185
Website: <http://www.immunoway.com>
Address: 2200 Ringwood Ave San Jose, CA 95131 USA



Please scan the QR code to access additional product information:
Talin-1 Rabbit pAb

For Research Use Only. Not for Use in Diagnostic Procedures.

[Antibody](#) | [ELISA Kits](#) | [Protein](#) | [Reagents](#)