

PPP1R15B Rabbit pAb

CatalogNo: YT5571

Key Features

Host Species

- Rabbit

Reactivity

- Human, Mouse

Applications

- WB, IHC, IF, ELISA

MW

- 78kD (Observed)

Isotype

- IgG

Storage

Storage* -15°C to -25°C/1 year (Do not lower than -25°C)

Formulation Liquid in PBS containing 50% glycerol, 0.5% BSA and 0.02% sodium azide.

Recommended Dilution Ratios

WB 1:500-1:2000

IHC: 1:100-1:300

ELISA 1:10000

IF 1:50-200

Basic Information

Clonality Polyclonal

Immunogen Information

Immunogen The antiserum was produced against synthesized peptide derived from the Internal region of human PPP1R15B. AA range: 411-460

Specificity PPP1R15B Polyclonal Antibody detects endogenous levels of PPP1R15B protein.

Target Information

Gene name PPP1R15B

Protein Name Protein phosphatase 1 regulatory subunit 15B

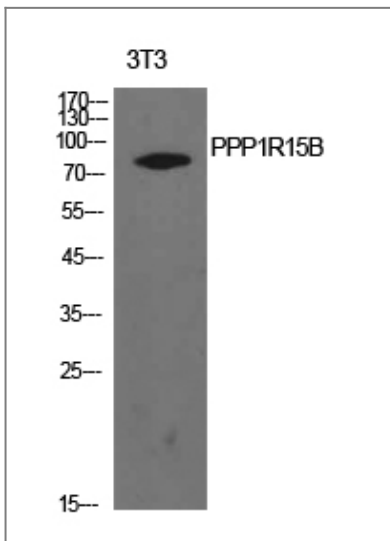
Organism	Gene ID	UniProt ID
Human	84919 ;	Q5SWA1 ;
Mouse		Q8BFW3 ;

Cellular Localization protein phosphatase type 1 complex,

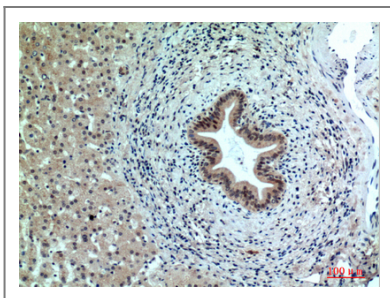
Tissue specificity Eye,Liver,Stomach,

Function Function:Maintains low levels of EIF2S1 phosphorylation in unstressed cells by promoting its dephosphorylation by PP1.,miscellaneous:The phosphatase activity of the PPP1R15B-PP1 complex toward EIF2S1 is specifically inhibited by Salubrinal, a drug that protects cells from endoplasmic reticulum stress.,similarity:Belongs to the PPP1R15 family.,subunit:Part of a complex containing PPP1R15B, PP1 and NCK1/2 (By similarity). Interacts with PP1.,

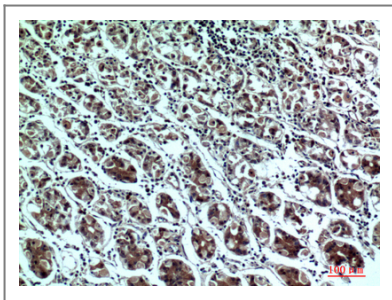
Validation Data



Western Blot analysis of NIH-3T3 cells using PPP1R15B Polyclonal Antibody. Secondary antibody(catalog#:RS0002) was diluted at 1:20000



Immunohistochemical analysis of paraffin-embedded human-liver, antibody was diluted at 1:100



Immunohistochemical analysis of paraffin-embedded human-stomach, antibody was diluted at 1:100

Contact information

Orders: order@immunoway.com
Support: tech@immunoway.com
Telephone: 877-594-3616 (Toll Free), 408-747-0185
Website: <http://www.immunoway.com>
Address: 2200 Ringwood Ave San Jose, CA 95131 USA



Please scan the QR code to access additional product information:
PPP1R15B Rabbit pAb

For Research Use Only. Not for Use in Diagnostic Procedures.

[Antibody](#) | [ELISA Kits](#) | [Protein](#) | [Reagents](#)